

FAMSUN
Integrated Solution Provider

Profile

FAMSUN Group Co., Ltd., headquartered in Yangzhou, China, is a global technology partner and the integrated solution provider of plant, equipment and services in feed manufacturing, grain milling, grain handling and storage, oilseed processing, animal farming, food processing, steel structure construction and industrial automation.

FAMSUN has over 2,800 employees, including 900 technicians and engineers. Backed by its strong R&D, FAMSUN has developed more than 120 series (700 models) of quality feed and grain processing machines and is capable of delivering all types of turnkey feed mill projects from normal animal feed production lines to high-end extruded aquafeed production lines.

FAMSUN operates 5 production sites as well as over 50 agencies, sales and service stations, and spare parts warehouses all around the world. FAMSUN has successfully completed over 8600 referenced projects in more than 140 countries.

Our vision is to become the global leader in machine manufacturing, plant engineering and technical services. We value innovation, hard work, dedication, integrity, quick response and team work.



8600+ referenced projects in **140+** countries

50+ agencies, sales & service stations and spare parts warehouses worldwide closed to customers

5 production bases, one in Egypt and five in China, total **74.07** hectares of manufacturing and distribution capacity

2800+ employees work in sales, customer service, engineering, R&D, production and logistics

More than **5%** of annual revenue invested in R&D every year

Equipment is marked by **CE** and **ATEX** symbol

FAMSUN

FAMSUN dreams to build a green and healthy supply chain **from farm to table** together with our customers.

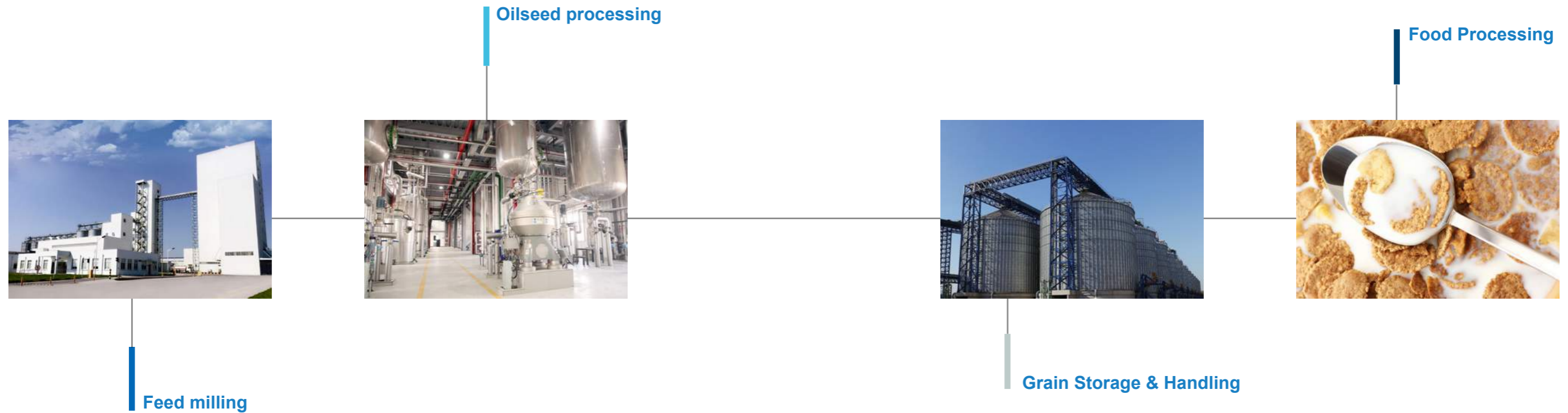
To realize this dream, we will reach beyond the boundary to become an **integrated solution provider**.

FAMSUN is our new brand.

It originates from **farm, family and sun**,

FAMSUN implies integrated solutions for a green and healthy farm-to-table supply chain, and fits into our globalization strategy.

Our Business



We are an essential link in the farm-to-table industry chain.

We provide integrated technical solutions and services.

We help feed the future. ”

FAMSUN is an integrated solution provider of plants, equipment and services in the farm-to-table supply chain. Our global ability and experience in turnkey project delivery in feed milling, grain logistics and processing, steel structure building as well as industrial automation has helped our customers succeed in their respective markets.

As world's demand for quality and safe foods grows, food supply chains have become more connected. Most of our customers diversify their businesses and extend to upstream and downstream links in order to boost productivity, efficiency and sustainability. To meet with customer's expectations of becoming a single-source supplier, which

shares knowledge, experience and resource, provides convenient, flexible and consistent technical supports to customers and help them grow businesses, we develop our business mainly along the chains where our customers doing business:

Feed Tech: processing machines and plants for animal feed, aquatic feed, dry pet food and premix;

Oil/Fat Tech: processing machines and solutions for oilseed preparation, oil extraction and refining, soybean meal fermentation, lecithin production, and oligosaccharides bioengineering.

Grain Tech: processing machines and facilities for grain conveying, cleaning, dedusting, drying, storage, loading and unloading.

Food Tech: processing machines and plants for the production of rice and value-added foods such as breakfast cereals, extruded snacks, meat products, etc.

Customer-oriented R&D

To bring about a technology based company

The success of FAMSUN as a leading solution provider in feed industry resides in its great research and development efforts. Since Innovation is the cornerstone of success, in order to maintain its innovation edge in the turbulently changing and intensely competitive market, the company invests an average of more than five percent of all sales annually in basic research and applied development.

With a stand of R&D Institutes in Asia, Europe and America, FAMSUN sophisticated specialists work around the clock in the development of existing products and solutions plus exploiting new terrain and unlock new business fields on the basis of markets analysis, customer needs evaluation and feasibility assessment. Additionally, FAMSUN maintains a close collaboration with other outstanding companies, inventive customers, renowned universities and institutes so as to constantly bring know-how together on technologies and transfer them to customer's facility.

+5%

of annual revenue invested
in R&D every year

Global-covered R&D institutes in Asia, Europe and America;

More than 5% of annual revenue invested in R&D;

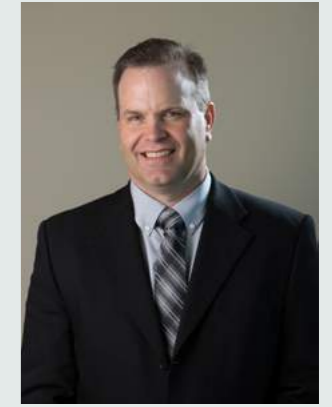
Almost 1/3 employees work in Research and Development;

A complete product portfolio to achieve production

and operation goals for feed producers;

State-of-the-art Test Center for customer-tailored trail test

and laboratory analysis.



Fundamental test platforms in the new Test Center for feed grinding, mixing, pelleting, raw material extrusion, twin-screw extrusion and drying as well as conveying are enabling FAMSUN to optimize processing line, obtain best production performance, and achieve high quality and safe feed for customers.

Honor

- 2003- China Feed Machinery Research Base
- 2006- China Famous Brand Product
- 2009- Post-Doctoral Working Station
- 2010- Key High-Tech Enterprise of National Torch Plan
- 2010- China's TOP 500 Machinery Companies
- 2011- High & New Technology Enterprise
- 2012- China Best Enterprise in Talents
- 2013- National R&D Center for Feed Equipment and Technology
- 2014- China National Enterprise Tehchnology Center
- 2014- International Technology Committee (TC) of Feed Machinery
- 2015- The ISO/TC293 Secretariat (Feed machinery)
- 2017- Won The Second Prize of China National Science and Technology Progress Award for a fourth time
- 2020 - Won the First Prize of China Machinery Industry Science and Technology Awards



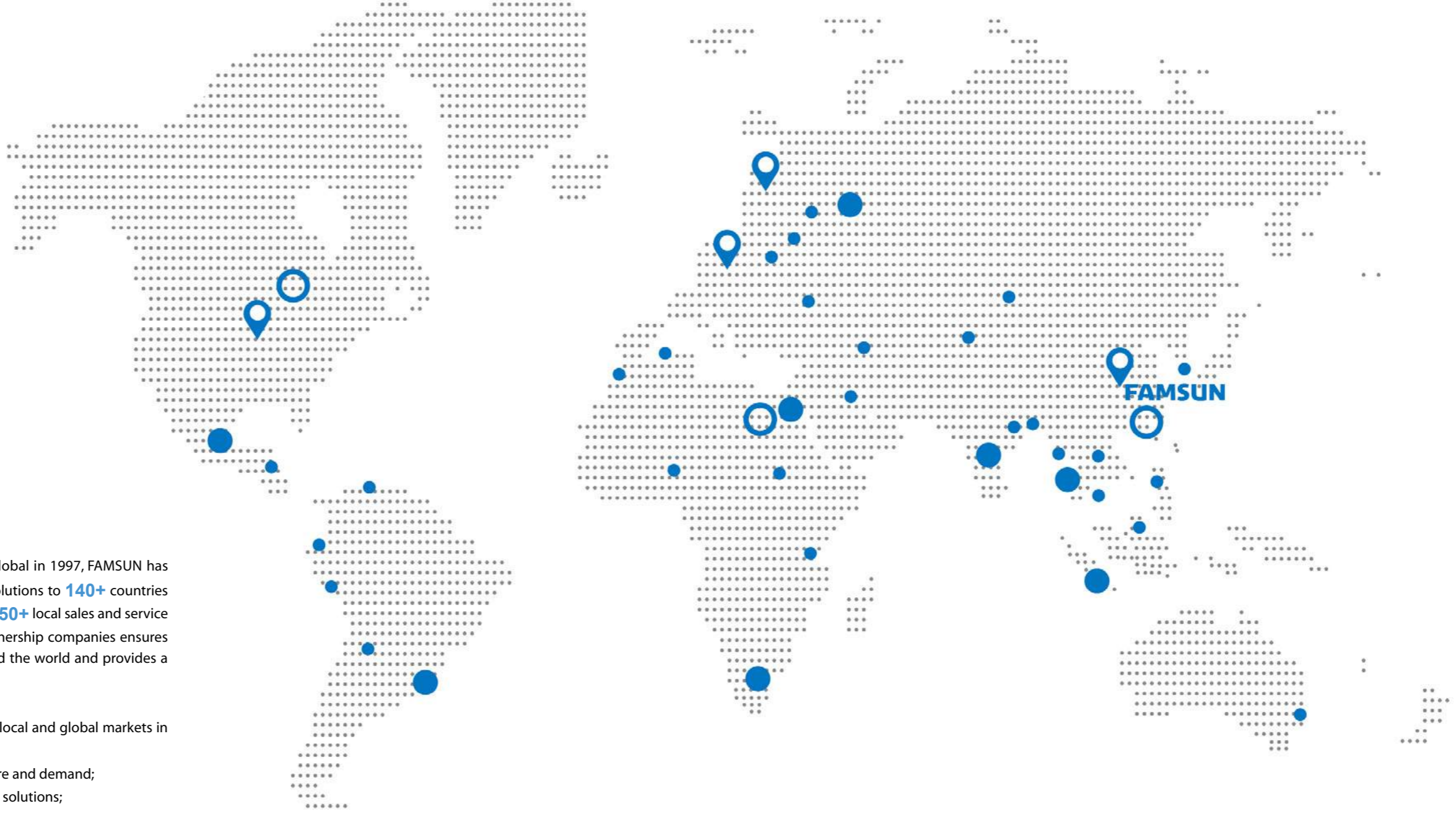
Advanced Manufacturing

Cutting edge technologies to manufacture excellent products

By cooperating with leading manufacturing tool companies, FAMSUN introduces advanced production technologies such as CNC machining centers, welding robots, pipelining production systems, lean manufacturing management, etc. in its workshops, to produce extra precision and high quality for every piece of FAMSUN product from material processing to machining, painting and assembly.



Global Presence



Think globally, act locally.

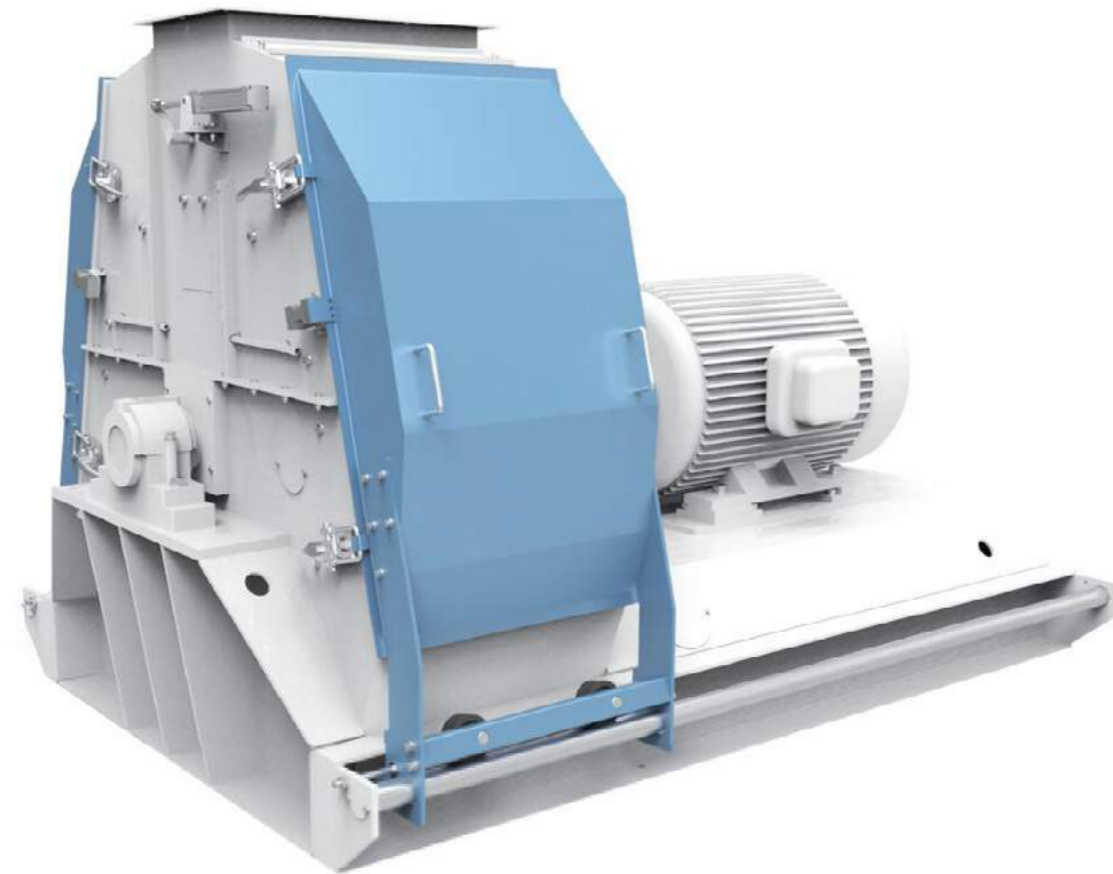
Since the execution of Go-Global in 1997, FAMSUN has delivered its products and solutions to **140+** countries around the world. A solid network of **50+** local sales and service offices, agencies and **20+** local partnership companies ensures that our global reach extends around the world and provides a neighborhood link to our customers.

In 2021, we will continue to develop local and global markets in ways that:

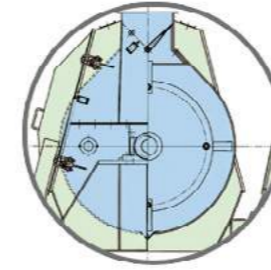
- > To learn and well know local culture and demand;
- > To bring leading technologies and solutions;
- > To improve food and nutrition security;
- > To share resources what we have;
- > To be a reliable partner of local industry;
- > To provide training and promote Youth Employment;
- > To take up social responsibility;
- > To help create a sustainable agri-food future.

- Offices and service sites
- 📍 R&D Institute
- Production Bases

FAMSUN Grinding Equipment



FAMSUN SFSP132 Series Hammermill



Water-drop shaped grinding chamber



One-step screen hold-down device

Patent No. ZL98 2 42415.9



High-precision dynamic balancing test



Fully-open sliding door

Patent No. ZL98 2 42414.0

The high efficient hammermill for regular normal- and coarse-grinding demands, particularly in feed pre-/post-grinding.

High capacity

Water-drop chamber with W-shaped second time grinding structure and increased large grinding surface, capacity increases up to 25%.

Stable performance

Dynamically balanced high-precision rotor and top hard wear-resistant hammers, stable running, long service life.

Friendly operation

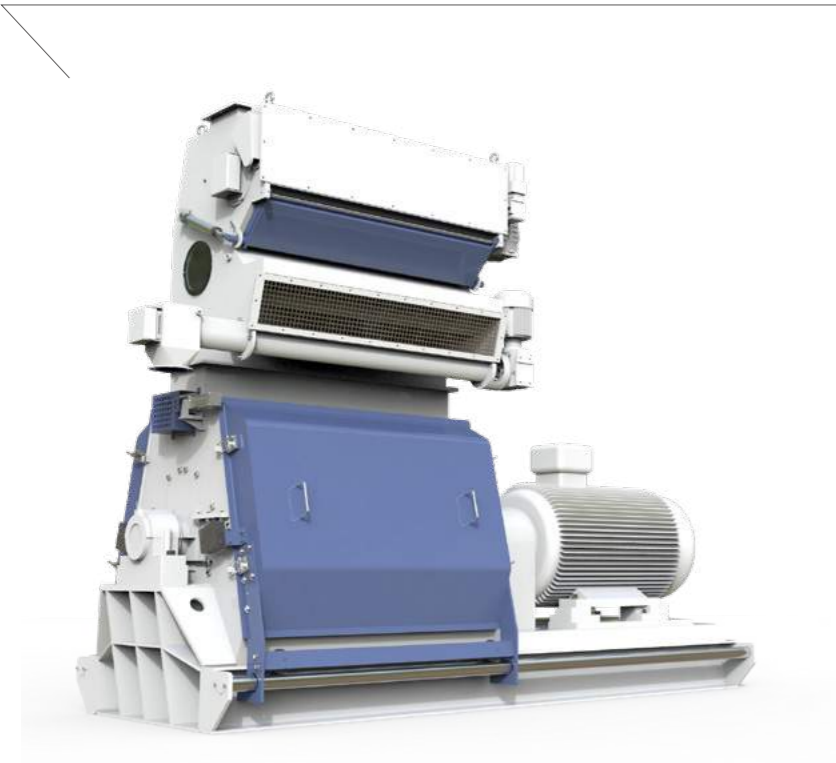
Patented one-step screen holding-down device and fully-open sliding door, easy access and maintenance; CE certified standard design for human & machine safety.

Customized solution

We can offer customized solutions for machine size, feeder, screen, aspiration system, underneath hopper etc.

Model	SFSP132×65G						SFSP132×102G			
	132		160		200		250		315	
Power (kW)										
Raw material	Wheat	Corn	Wheat	Corn	Wheat	Corn	Wheat	Corn	Wheat	Corn
Sieve diameter (mm)	Φ2.5	Φ2.0	Φ2.5	Φ2.0	Φ2.5	Φ2.0	Φ2.5	Φ2.0	Φ2.5	Φ2.0
Capacity (t/h)	10-15	14-20	14-20	18-24	16-25	23-28	21-28	27-34	25-32	32-40
Selection recommended	Livestock and poultry feed, Sieve diameter≥Φ1.5									

FAMSUN SWFP Series Fine-Grinding Hammermill



Widened grinding surface



U-shaped step grinding structure



Fully-open sliding door

Specialized for the fine grinding of pre-crushed various brokens in feed, food and oilseed industries. Pre-broken coarse initial materials like cereal grains, oil cakes and meal in particular.

High capacity

Patented axial air inlet and water drop shaped step grinding structure and tuning technology for optimal grinding; widened grinding surface (1.5 times of normal), capacity increase 25% possible.

Stable performance

Rigid structure, optimal hammer arrangement and dynamically balanced high-precision rotor, stable running and low noise; reversible rotation, long service life.

Friendly operation

Patented one-step screen hold-down device and fully-open sliding doors, easy access and maintenance; CE standard design for human & machine safety.

Customized solution

We offer customized solutions for machine size, feeder, screen, aspiration system, underneath hopper etc.

Model SWFP	Rotor Dia.(mm)	Width (mm)	RPM	Power (kW)	Capacity (t/h)	Air volume (m ³ /h)	Fan power (kW)
SWFP66×150	660	1500	2970	200/250/315	14~22	15000	45
SWFP66×125	660	1250	2970	160/200/220/250	12~19	13000	37
SWFP66×100	660	1000	2970	110/132/160	8~13.5	10000	30
SWFP66×80	660	800	2970	90/110	6~8	8000	22
SWFP66×60	660	600	2970	55/75	4~7	6000	15

Note: Grinding pre-broken corn (moisture content <14%) with 1.0 mm screen.

Highly efficient pulverizer for ultra-fine grinding of raw materials in aquafeed, pet food and feed production. Grinding more value out of your raw materials.

High energy efficiency

Redesigned convex cover and aspiration system to diminish resistance, avoid over-grinding, facilitate discharge and reduce power consumption.

Increased capacity

Thanks to the innovative guiding to grind technology, output of the pulverizer is increased by 20-40%.

Good product quality

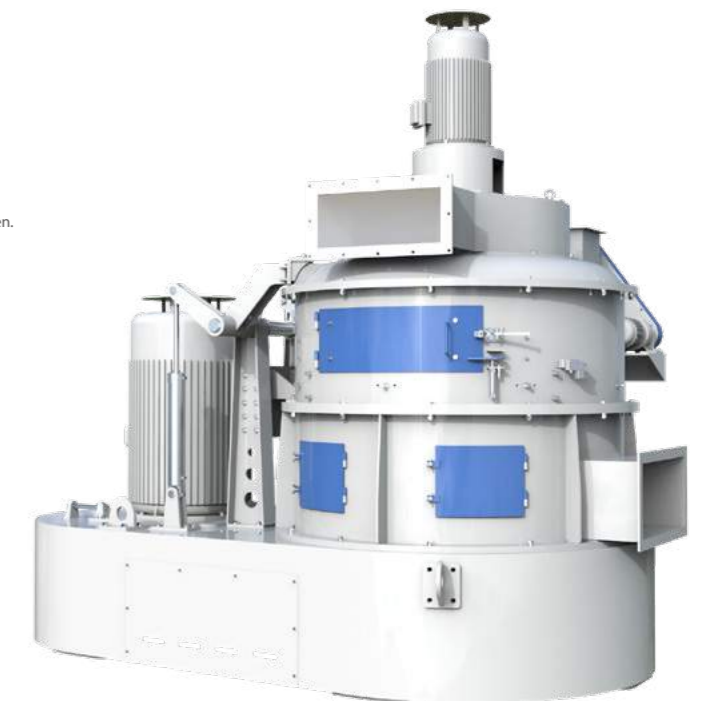
Optimal grinding chamber and aspiration transport ensures a low temperature grinding without nutrient degradation.

Low maintenance

No sieve furnished, and wear parts with a longer service life, resulting in less maintenance required.

Model	SWFL170	SWFL150	SWFL130	SWFL110C
Capacity (t/h)	8/9	5/6	4.5/5	2.5-4
Power (kW)	220/250	160/200	132/160	110

Note: For grinding high-grade aquafeed with 95% product passing through 80-mesh screen.



FAMSUN SWFL Series Ultra-fine Pulverizer

FAMSUN SFSP112 Series Hammermill



High efficient hammermill for the coarse-and normal-grinding in feed mills, biofuel, distilleries, food factories, edible oil mills etc.

High capacity

Water-drop shaped chamber with W-shaped second time grinding structure, optimal hammer arrangement and screen with adjustable tip system for high grinding efficiency.

Stable performance

Dynamically balanced precision rotor and reinforced wear-resistant hammers, stablerunning; reversible rotor, long service life.

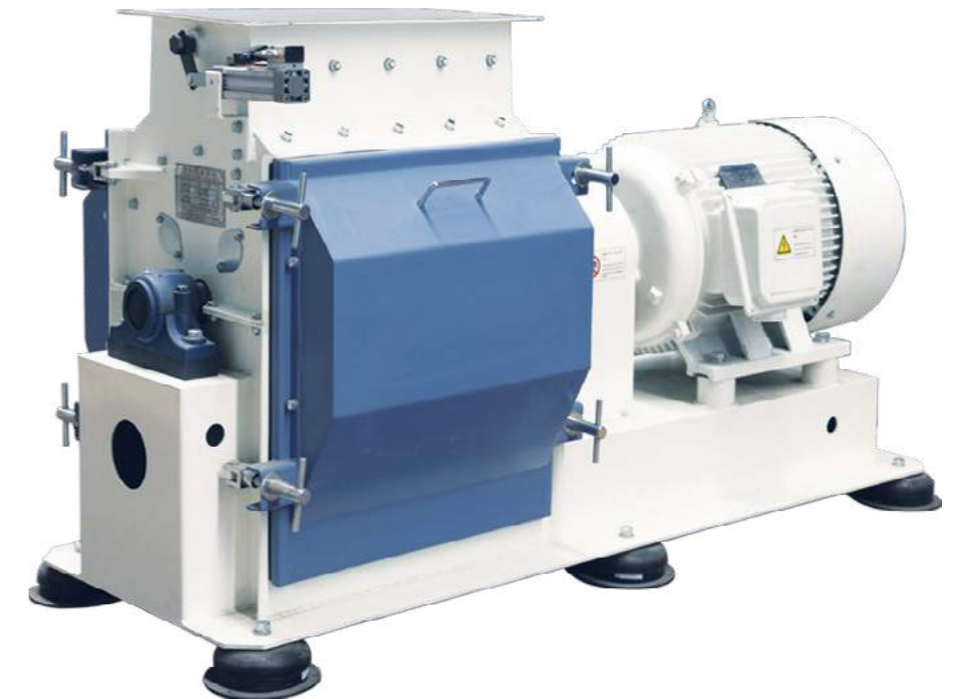
Friendly operation

Patented screen carriage with one-step screen hold-down device and fully-open sliding door, easy access and maintenance; CE certified standard design for human & machine safety.

Model	SFSP112×40E	SFSP112×60E	SFSP112×80E	SFSP112×110E
Power (kW)	75/90/110	110/132/160	200/220/250	250/315/350
Capacity (t/h)	12-20	22-30	36-45	46-65

Note: corn.

FAMSUN SFSP56P Series Hammermill

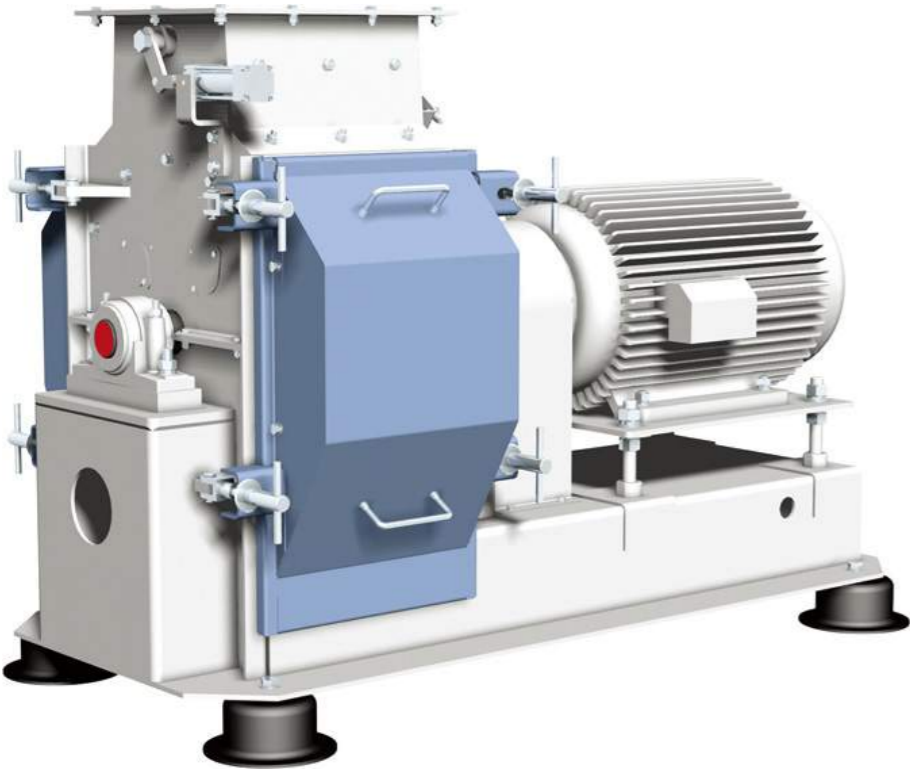


The hammermill featuring low speed, specialized for layer feed production.

Available of low speed configuration and double speed configuration.
Optimal hammer arrangement, increased capacity.
Reversible rotor, prolonged service life.
CE standard design for human & machine safety, safer and more reliable.

Model	SFSP56×60P	SFSP56×80P
Power (kW)	22	37
Capacity (t/h)	8.0 screen (crumbling)	8-10
		10-16

FAMSUN SFSP56C Series Hammermill



Our classic hammer mill has proven long time and stable performance in feed mills all over the world.

Model	Power (kW)	Capacity (t/h)
SFSP 56x40C	30/37	4-6

Note: Grinding corn (moisture content ≤14%, bulk density ≥690g/l) with Ø3.0mm perforated screen.

FAMSUN TWLY Series Impeller Feeder



Classic feeder for hammermill in grain & oilseed processing plants, feed mills and food factories.

Suitable for feeding granular and powdery materials.
 Variable frequency enabling continuous feeding rate adjustment.
 Magnets for metal removing.
 Sealing at shaft ends, long service life ensured.
 Adjustable gap between baffle and feeding roller.

Model	TWLY 20x30	TWLY 20x60	TWLY 20x80	TWLY 20x100	TWLY 20x102	TWLY 20x125	TWLY 25x30	TWLY 25x44	TWLY 25x60	TWLY 25x65	TWLY 25x80	TWLY 25x102	TWLY 25x110	TWLY 25x125
Capacity (t/h)	2.5-9	5-20	7.5-26.5	10-30	10-33	13.5-45	9-22	15-32	20-45	21-60	25-60	30-75	35-80	40-90
Power (kW)	0.75	1.1	1.1	1.5	1.5	2.2	1.1	1.5	1.5	1.5	1.5	2.2	2.2	2.2

The values of productivity are calculated based on corn with bulk density of 720kg/m³ and motor working frequency within 20-80 HZ.

FAMSUN Mixing Equipment

FAMSUN SJHS Series Double-Circle Paddle Mixer



Highly efficient mixer with feed-to-food safety standard for animal feed, food and pet food industries.

High homogeneity

Patented double-circle paddle rotor, mixing homogeneity $\geq 95\%$ (i.e. CV $\leq 5\%$).

Hygienic design

Optimized paddle-to-wall gap and fully open discharge doors, minimum residue, no contamination; unique air-sac seal, no leakage; optional corrosion-resistant steel design.

Easy maintenance

Large access door for cleaning and maintenance, time saver.

High efficiency

High mixing homogeneity with short dry mixing (60s~90s per batch) and discharging time.

Model	Power (kW)	Capacity (kg/bat)	Volume (m ³)
SJHS0.2	2.2/3	100	0.2
SJHS0.5	5.5/7.5	250	0.5
SJHS1	11/15	500	1
SJHS2	18.5/22	1000	2
SJHS3	30/37	1500	3
SJHS4	37/45	2000	4
SJHS6	2×30	3000	6

Note: Liquid addition possible, 3% maximum.



FAMSUN SLHS Series Twin-Shaft Paddle Mixer

Highly efficient mixer for most industrial blending applications, premix / additive / feed in particular.

Wide application

Suitable for various blending applications such as premix, additive, feed, food cement, chemical and pharmaceutical industries.

Stable and efficient

Low speed and gentle mixing, stable running and no segregation; High homogeneity (CV $\leq 3\sim 5\%$) with short dry mixing (60~90s) and discharging time.

Hygienic design

Fully-open bomb doors and W-shaped trough plus unique air-sac seal, momentary discharging, minimum residue, no leakage; optional stainless steel design.

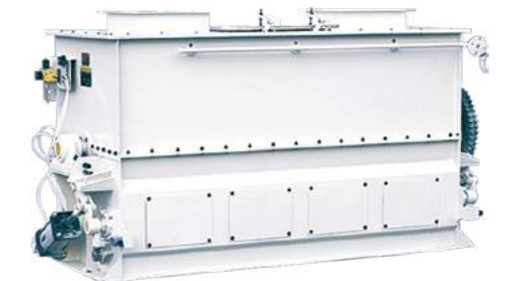
Ease maintenance

Large access door and optional air-clean device, ease of cleaning and maintenance.



Model	SLHS1	SLHS2	SLHS3	SLHS4	SLHS7A	SLHS8A
Power(kW)	11/15	18.5/22	22	37/45	45	45
Capacity (kg/bat)	500	1000	1500	2000	3000	4000
Volume (m ³)	1	2	3	4	7	8
Remark	The capacity is based on a material bulk density of 0.5t/m ³ .					

Model	SLHS4ZL	SLHS7ZL	SLHS8ZL	SLHS10ZL	SLHS12ZL	SLHS16ZL
Power(kW)	18.5×2	22×2	30×2	30×2	37×2	45×2
Capacity (kg/bat)	2000	3000	4000	5000	6000	8000
Volume (m ³)	4	7	8	10	12	16
Remark	The capacity is based on a material bulk density of 0.6t/m ³ .					



FAMSUN SLHY Series Horizontal Ribbon Mixer

Batch mixer suited for blending dry, free-flowing ingredients in feed, food, chemical and pharmaceuticals industries.

Model	Power (kW)	Capacity(kg/bat)
SLHY2.5C	15	1000
SLHY5C	30	2000

Optimal rotor structure, even fill of the mixer and no death corner.

Mixing homogeneity: CV $\leq 7\%$, mixing period: 3~6 min.

Capable of fat application.

Return air chute furnished for internal and external pressure balancing.

Liquid Adding System

With modular design, liquid tank, pumping system and pipeline system are available separately or as a whole, which offers flexible and reasonable options that satisfy the different requirements of most production plants in liquid application and machine layout, eventually contributing to diminished liquid leakage and smaller space occupation.

Thanks to automatic control, the liquid addition is more reliable and convenient with high accuracy feature.



Large Oil Tank

Model	MSYG30	MSYG30 (horizontal)
Capacity (m ³)	30	30
Weight (kg)	6113.5	4630.8
Dimension (mm*mm, mm*mm*mm)	Diameter*Overall height 2948*8053	Length*width*height 5577*3000*4569

Note: 1. Steam heating; 2. Stop valve and reducing unit shall be configured for the pipeline between large liquid tank and pumping system.

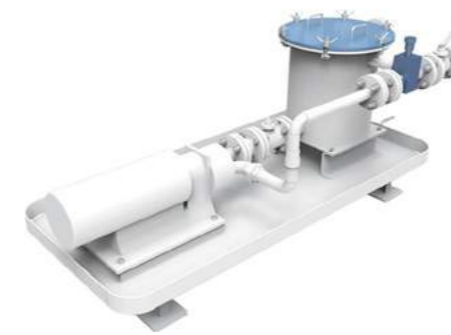
Daily Tank

Model	MSYG1	MSYG2	MSYG3	MSYG4
Optional electric heater power (kW)	2+2+2	2+2+2	2+2+2	2+2+2
Storing volume (m ³)	1	2	3	4
Weight (kg)	547	1020	1135	1332
Anchor bolt size (mm*mm)	1100*1274	1500*1584	1500*1584	1500*1584
Dimension (mm*mm*mm)	1500*1600*2600	2000*2000*2680	2000*2000*3180	2000*2000*3788

Note: 1. An agitator (power: 1.5kW) is optional for daily tank.
2. It is suggested to install turning fork level indicator for daily tank with agitator and floating ball level indicator for that without agitator.



Pumping System



Model	MSBS40		MSBS80	
	Oil/Fat	Molasses	Oil/Fat	Molasses
Flow rate (L/min)	25	28	60	56
Outlet size (mm)	DN20	DN25	DN25	DN40
Power (kW)	2.2	3	4	5.5
Anchor bolt size (mm*mm)	400*1750	400*1750	600*1950	600*1950
Dimension (mm*mm*mm)	1000*2319*905	700*2319*905	1000*2824*1030	1000*2824*1030

Model	MSBS160	
	Oil/Fat	Molasses
Flow rate (L/min)	150	150
Outlet size (mm)	DN32	DN40
Power (kW)	7.5	11
Anchor bolt size (mm*mm)	600*1950	600*1950
Dimension (mm*mm*mm)	1000*2824*1005	1000*2824*1005

Note: Model selection usually depends on the flow rate requirement of liquid addition. As for molasses delivery, it is suggested to configure a gear motor for the pumping system.

Pipeline System



Model	MSGL15		MSGL25	
	Oil/Fat	Molasses	Oil/Fat	Molasses
Flow rate (L/min)	1-22	4-100	17-90	9-300
Pipe joint size (mm)	DN15	DN25	DN25	DN25
Brand of flow meter	Chinese Brand	E+H electromagnetic	Chinese Brand	E+H electromagnetic
Dimension (mm*mm*mm)	1650*420*1328	1650*420*1328	1950*409*1353	1950*409*1353

Model	MSGL40	
	Oil/Fat	Molasses
Flow rate (L/min)	42-225	
Port size (mm)	DN40	
Brand of Flow meter	Chinese brand	
Dimension (mm*mm*mm)	1990*443*1383	

Note: The selection of pipeline and flow meter usually depends on the flow rate requirement of liquid addition. The required flow rate usually is 1/2 of the upper limit of the flow meter.

FAMSUN SYTC Series Scale Type Liquid Adding System

Load-cell weighing plus automated control, precise and reliable. Widely used for adding cohesive liquid such as molasses, fat/oil, phospholipid, etc. into a batch mixer.

Model	Adding Rate (kg/min)	Power (kW)	Adding Precision (%)
SYTC50	50	2.2	0.5
SYTC100	100	3	0.5
SYTC150	150	5.5	0.5
SYTC200	200	5.5	0.5



FAMSUN Pelleting Equipment

FAMSUN SZLH Series Pellet Mill



Gear-drive for reliable production

High machining and installation precision of gear box contributes to reliable, precise and efficient transmission, bringing in stable production without failure downtime.

High capacity and energy-efficiency

Optimized pellet chamber and increased die working area are able to guarantee the consistent pellet quality, high capacity and lower energy consumption (energy consumption rate down to 6.3kW·h/t for livestock feed production).

Smart control and easy operation

Fuzzy logics is introduced to the controller of the pelleting system to optimize processing parameters, eliminate human factors and achieve more effective production. Unique die changing and roller adjustment tools for easing labor.

User-friendly operation

The design details based on CE standard such as overload protection, door protection, gearbox protection including oil level monitor and iron-remove structure, and guard cover ensure a safe, reliable and stable production.

Model	Power (kW)	Inner dia. of die (mm)	Driving mode	Die holding type	Qty of roller	Capacity (t/h)	Cooler for gearbox
SZLH1070×370(K70)	500/450	1070	Gear-drive	Clamp	2	65~70	Yes
SZLH985×340(K60)	450	985	Gear-drive	Clamp	2	55~60	Yes
SZLH885×330(K50)	355	885	Gear-drive	Clamp	2	50~55	Yes
SZLH785×270(K40)	315	785	Gear-drive	Clamp	2	40~45	Yes
SZLH685×245(K35)	250	685	Gear-drive	Clamp	2	35~40	Yes
SZLH635×220(K30)	220	635	Gear-drive	Clamp	2	28~32	Yes
SZLH575X210 (K25) / SZLH575X205 (K20)	200	575	Gear-drive	Clamp	2	20~25	Yes
SZLH535×190(K15)	160	535	Gear-drive	Clamp	2	15-20	No

Note: All the data above is based on producing pig feed in China with die hole of 3.8mm in diameter and 1:6.5 in compression ratio. SZLH575X205 (K20) can only be sold to the countries/regions using 50Hz power frequency.

Automatic Remote Roll Adjustment System



The system can realize a remote, real-time and precise adjustment of gap between roll and die, which effectively saves time and labor. The whole adjusting gearbox is made of stainless steel. This design makes it hygienic, aesthetic and easy to clean. The system is driven by an air motor with gap memory function. After starting the machine, it is able to enter working status immediately.

Save use cost

When choke-up happens, using the system to separate rolls from die to protect equipment. When resuming production after shutting down, rolls can return to previous location quickly, which can improve production efficiency.

Improve service life of accessory

Gap between roll and die is controlled precisely to avoid abnormal wear caused by accidental contact.

Safety

Automatic remote control. No need to open pellet chamber during adjusting process.



FAMSUN SZLH00 Series Pellet Mill

Highly efficient pellet mill for poultry feed, livestock feed and aquafeed production.

High efficiency

Stable two-motor timing belt drive, large torque but low noise; optimized area-to-power ratio of ring die, maximum output; triple rollers and cutters and stable production.

Hygiene and safety

CE certified standard design and available stainless steel conditioner for feed, human and machine safety.

Flexible production

Wide product range: Φ 1.5mm~ Φ 12mm pellets; conditioner with molasses and steam adding function.

User-friendly operation

Hydraulic system for die change and roller adjustment (optional), quick and precise operation; auto-lubrication system (optional) and die & roller lifting device, saved labor; on-site touch screen control.

Model	Inner Dia. (mm)	Ring die Pelletizing width (mm)	Roller number	Main motor power(kW)	Feeder motor power(kW)	Capacity (t/h)
SZLH550×170	Φ 550	170	2/3	55×2/75×2	1.5/2.2	12-16
SZLH650×175	Φ 650	175	3	90×2/110×2	2.2	16-23

FAMSUN SZLH10 Series Pellet Mill



Highly efficient pellet mill for poultry feed and aquafeed processing.

High efficiency

Optimized area-to-power ratio of ring die, maximum output; 2-motor belt-drive featuring smooth running and low noise, optimal energy efficiency.

User-friendly operation

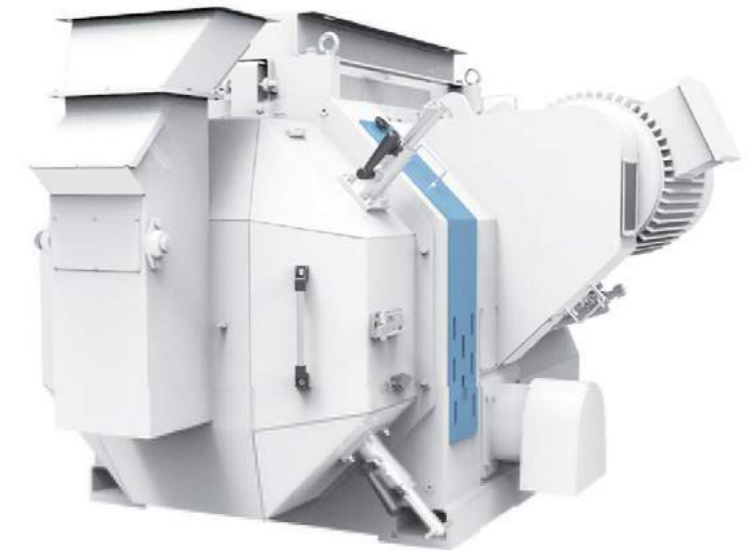
Wide product range: $\Phi 2.0\text{mm}$ ~ $\Phi 10\text{mm}$ pellets (optional); hydraulic die change and automatic roller adjustment, quick and precise operation, low labor intensity; hygienic and CE standard design for feed, human and machine safety; fully-automatic control.

Good pellet quality

Efficient conditioner, excellent pellet formability and durability; patented adjustable cutter.

Model	SZLH630×200
Main motor power (kW)	90×2/110×2
Feeder motor power (kW)	2.2
Capacity (t/h)	16-25
Inner Dia. of Die (mm)	$\Phi 630$
Pelletizing width (mm)	200
Roller number	2

FAMSUN SZLH 460×160 Series Pellet Mill (V4)



High-efficient pellet mill for producing feed for poultry and pigs.

Distinguished pelleting stability

Unique double-timing belt driving and cooling system for motors output same torque simultaneously, sectional ring die clamper for fixing ring die onto rotor firmly, widened supporting area of main shaft as well as wearing reduction designed working parts, are all enabling long-time stable production.

Superior pellet quality

Conditioning system (optional) DDC Conditioner and/or STZW Hygienizer for longer retention time and more beneficial to gelatinization and sterilization of feed, contributing to consistent top quality products. Pellet size ranging from $\Phi 2.0\text{mm}$ to $\Phi 10.0\text{mm}$.

High output

Optimized feed-to-pellet deflector structure, widened ring die working area (+15~25%) to enable consistent high output and low energy consumption.

User-friendly

Hydraulic system for die change and roller adjustment, quick and precise operation; auto-lubrication system and die & roller lifting device, saved labor; overload protection and door protection for human and machine safety.

Customized solution

Optional of different conditioners and different ring die mounting patterns to meet different production demands.

Model	Inner dia. (mm)	Ring die Pelletizing width (mm)	Roller number	Main motor power (kW)	Feeder motor power (kW)	Capacity (t/h)
SZLH 460×160 (V4)	$\Phi 460$	160	2	55×2	1.5	8.0~14.0

Note: Above data refers to broiler feed production with $\Phi 3.0\text{mm}$ die holes.

FAMSUN SZLH 350/420 Pellet Mill



Time-tested pellet mill for processing feeds for livestock, poultry and fish.

Power drive system for optimal energy efficiency

The robust two-motor belt-drive system allows for smooth operation, low noise and optimal energy utilization. The improved drive system simplifies maintenance.

Cost-efficiency alternative thanks to small footprint, excellent performance

Superior compact design extremely slashes investment cost, enabling further line capacity expansion. Low operation cost thanks to easy maintenance, resulting in increased up time.

Customer-oriented design

The optionally available die lift for the installation of ring die allows quick die change to the specific needs of the customer.

Model	SZLH350	SZLH420
Main motor power (kW)	30×2	55×2
Capacity (t/h)	2-6	6-12
Inner Dia. of Die (mm)	Φ350	Φ420
Roller number	2	2
Feeder motor power (kW)	0.75	1.5
Pellet size (mm)	Φ2-Φ10	Φ2-Φ10

FAMSUN SZLH X Series Pellet Mill

High-efficient pellet mill for shrimp feed production.

Functional conditioner

Novel multi-pass functional conditioner for long retention time. It consists of pre-conditioner for mixing material and steam intensively, keeper for long time heat preservation to promote gelatinization, breaker to further unify feed mash structure, and the last-pass conditioner to ensure consistent and uniform discharge.

Superior pellet quality

Thanks to the functional conditioners, conditioning times are lengthened to more than 5mins, which contributes to sufficient mixing and gelatinization and resulting in hygienic and consistent good quality of shrimp feed. Pellet size ranging from Φ1.2mm to Φ2.5mm, Starch gelatinization ≥45%.

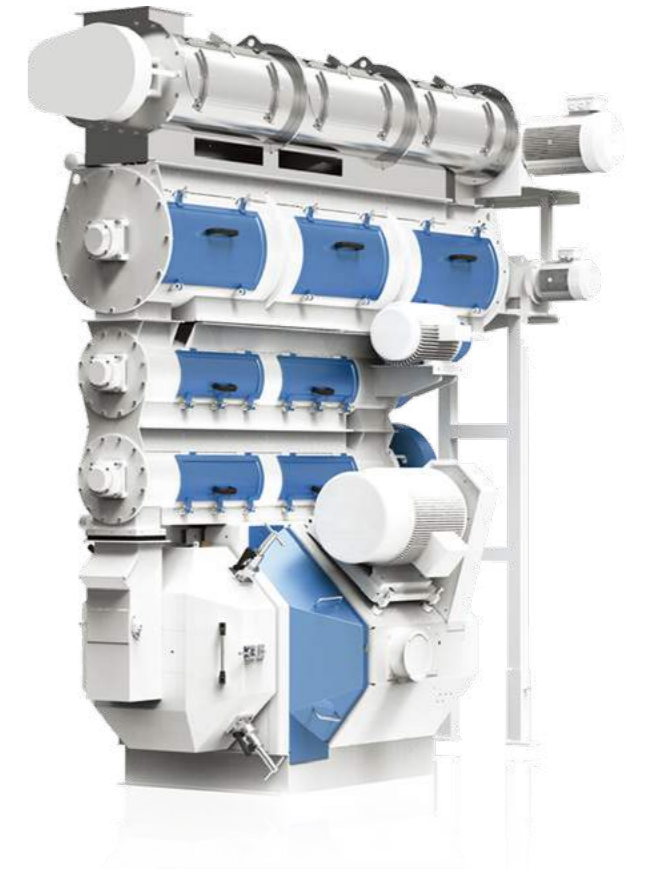
High output

Optimized feed-to-pellet deflector structure, widened ring die working area(+15~25%) to enable consistent high output and low energy consumption.

User-friendly

Optional hydraulic system for die change and roller adjustment, quick and precise operation; auto-lubrication system and standard die & roller lifting device, saved labor; on-site touch screen control.

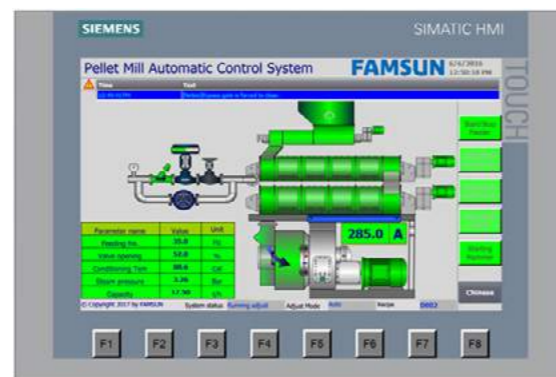
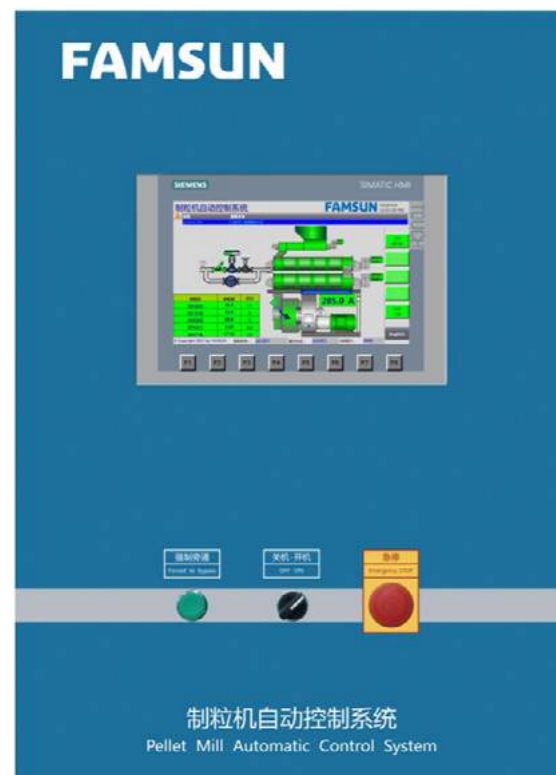
Model	SZLH650×175X	SZLH550×170X
Main motor power (kW)	90×2	55×2
Capacity (t/h)	4.5~5.5	3~5
Inner Dia. of Die (mm)	Φ650	Φ550
Roller number	3	2
Feeder motor power (kW)	2.2	2.2



Shrimp feed pellets in different sizes



FAMSUN Control System for Pellet Mill



FAMSUN pellet mill control system has been improving production efficiency, reducing energy and saving labor cost for hundreds of domestic and international clients since its release in 2010. Based on its smart control strategies, the system can achieve excellent adjustment for both flow rate of material feeding and steam adding like experienced operators. The system also has the advantage of one-key start function, instant auto/manual switch, anti-block, precise temperature control and auto stop when there's no product. Labor is significantly reduced and product quality is ensured.

Off-site operation (optional)

With this system, operator doesn't have to be on job site and feed production can be controlled in the central control room except the start/stop operation.

Data collection and reporting (optional)

The system can collect detail production data for inquiry. After each production shift, it can generate customized report for management purpose.

One-key start and auto stop

Operator can start the pellet mill with only one click. According to its condition, stable time for hot start is 1.5 minutes and for cold start is 3 minutes. The system can automatically stop when there's no product in the machine.

Instant Auto/Manual switch

Instant switch between Auto and Manual mode can be achieved at anytime during startup and running.

Anti-blockage and precise temperature control

With FAMSUN initiated make-and-break by-pass technology and effective precautions, problems such as ring die "blockage" and skidding can be eliminated. Conditioning temperature can be adjusted automatically according to the set-point with an accuracy of ± 1.4 .

Stable and reliable performance

Developed based on Siemens S7-1200 series PLC and KPI series touch screen, and including Spirax Sarco valves for steam adding adjustment as well as applying PROFINET technology, the control system contributes to stable and reliable pelleting production.

Application

The control system is mainly used to control FAMSUN pellet mill in feed production. Extended application is also available for controlling the pellet mill manufactured by other companies.

Benefits

Reducing labor: For a factory with 3 pelleting lines, it only requires one operator per shift.
 Increasing production: The output of a pellet mill is able to be increased by 5-8% for each production shift.
 Saving energy: The electricity consumption of per ton product is reduced by 8-10%.



FAMSUN Conditioning Equipment

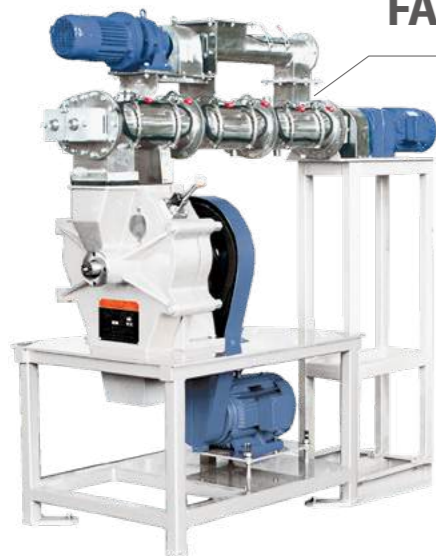
FAMSUN SBTZ Series DDC Conditioner



Made of stainless steel.
 Long retention time: 60~90 s.
 High gelatinization: 45~50%.
 Large side access door design for easy cleaning and maintenance.

Model	SBTZ10	SBTZ33	SBTZ39	SBTZ45
Power (kW)	3	18.5	22	30
Capacity (t/h)	0.3-0.5	9-18	10-25	15-35

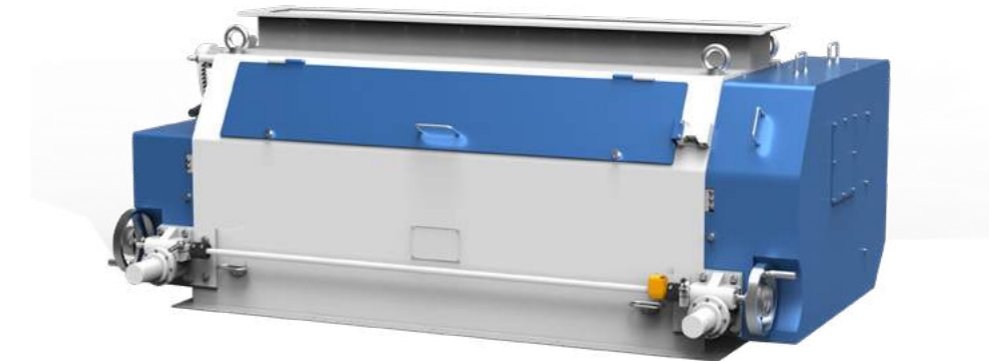
FAMSUN Lab-size Pellet Mill



Mono roller and small inner diameter of die. Available with die openings varied from Ø2mm to Ø12mm, satisfying different experimental designs' requirements. Furnished with a stainless steel DDC conditioner, high-efficient conditioning achieved. Automatic control, precisely controlled adding rate and convenient data recording.

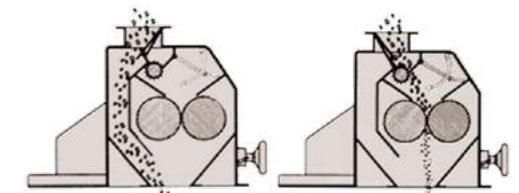
Model	MUZL180
Power (kW)	7.5
Capacity (t/h)	0.05-0.2
Inner Dia. of Die (mm)	Φ180
Roller number	1

FAMSUN MUSL Series Crumbler



The most cost effective machine to produce small pellet feed for poultry, livestock and aquatic animals.

Material guiding design (optional) and adjustable roller gap for more flexible crumbling process, achievable pellet size as small as 0.8mm~1.5mm.

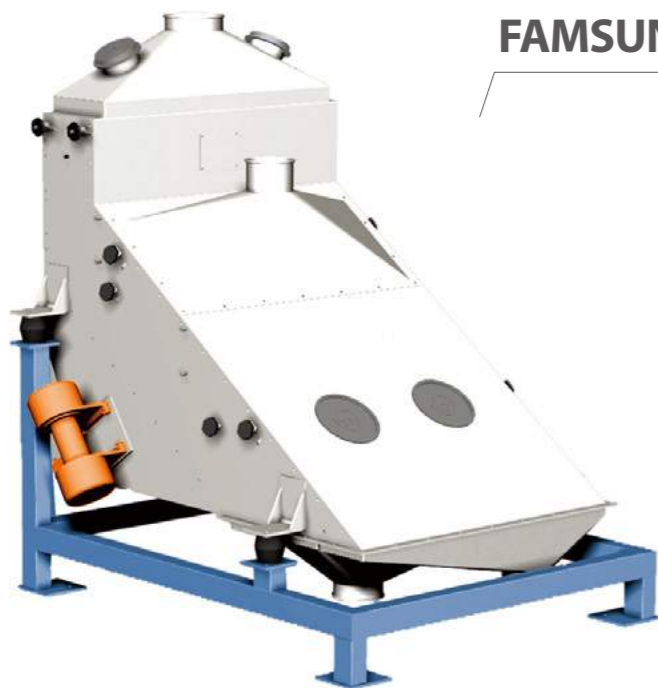


		MUSL	MUSL	MUSL	MUSL	MUSL	MUSL	MUSL	MUSL	MUSL
Model	MUSL20×80	24×110B(X)	24×110B	24×110B(II)	24×165B(II)	24×165B	24×165B(X)	30×180B	30×180B(X)	30×180B(II)
Main motor power (kW)	7.5	11+1.5	11	7.5+1.1	15+1.5	15	15+1.1	22	22+1.1	22+1.5
Capacity (t/h)	5-8	10	10	2-4	20	20	3-6	28	4-8	28
Remark	2 rolls	3 rolls	3 rolls	3 rolls	3 rolls	3 rolls	3 rolls	3 rolls	3 rolls	3 rolls

Note: X represents the special crumbler for shrimp feed.

FAMSUN Sifting Equipment

FAMSUN SFJZ Series Vibrating Sifter

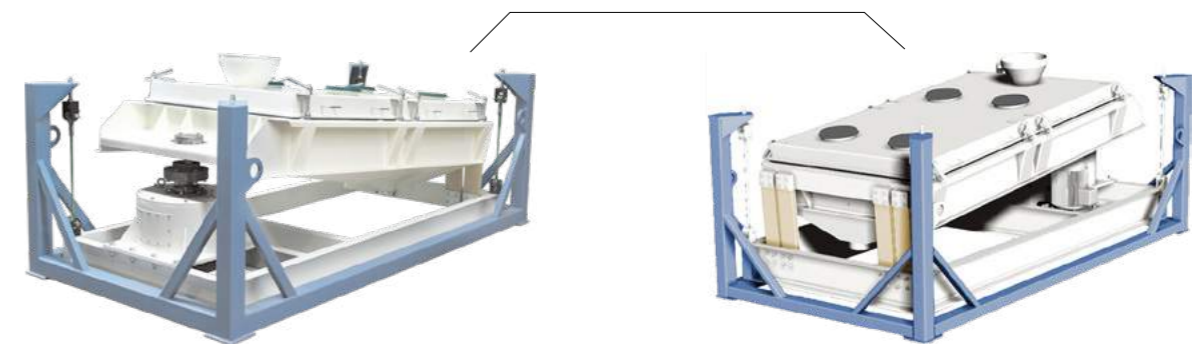


The classic sifter for finished product in a pellet feed line.

Compact structure.
Adjustable vibrating and low noise.
Function of quick screen changing.

Model	SFJZ100×2	SFJZ125×1	SFJZ150×2	SFJZ150×2B
Capacity (t/h)	4-10	15	20-25	30-40
Power (kW)	0.2×2	0.37	0.55×2	0.55×2
Vibrational frequency (Hz)	960	960	960	960

FAMSUN SFJH Series Rota-shake Sifter



Suitable for the cleaning and grading treatment of powdery and granular materials or products in feed mills.

Balance weight, suspended elastic support, swing design and low noise.
Easy change of screen.

Double-deck sifter, B type

Model		SFJH130×2B	SFJH140×2B
Capacity (t/h)	Pellet	14-18	20-22
	Mash	12-15	15-18
Power (kW)		3	4

Double-deck sifter, C type

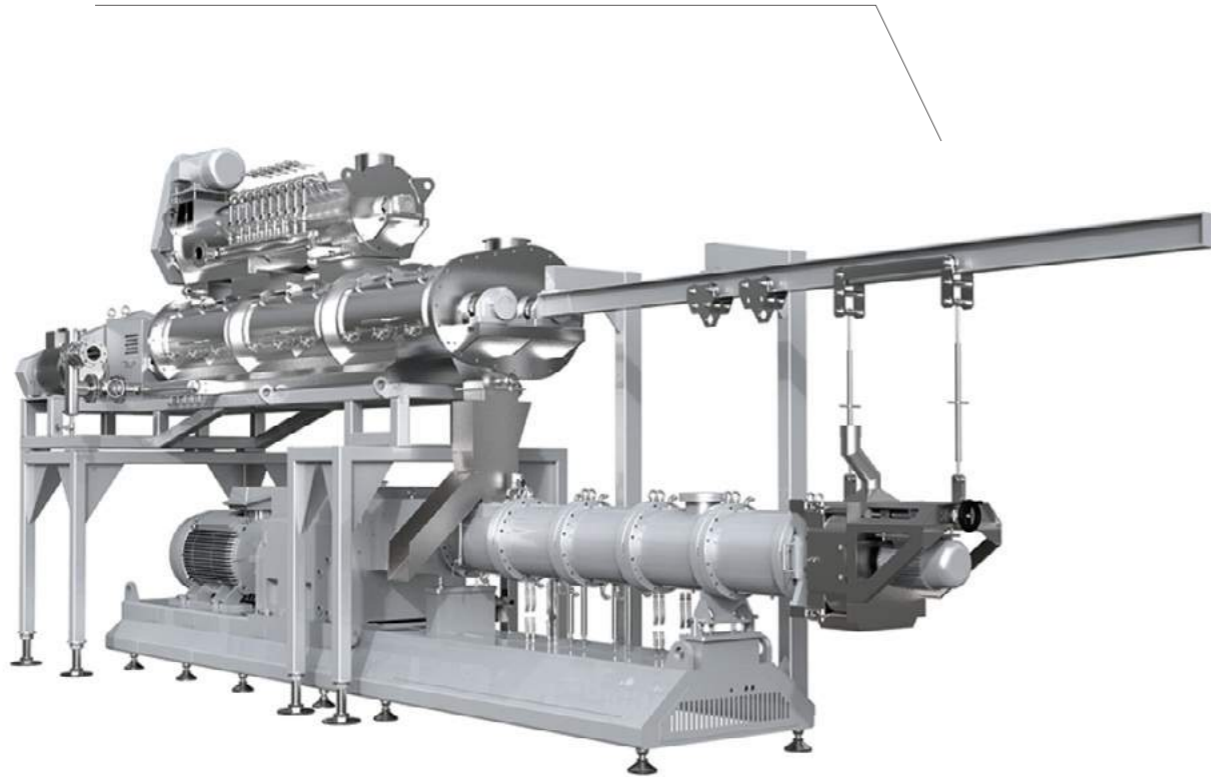
Model		SFJH80×2C	SFJH110×2C	SFJH130×2C	SFJH130×3C
Capacity (t/h)	Pellet	5-8	8-10	10-15	10-15
	Mash	4-6	6-8	10-13	10-13
Power (kW)		2.2	2.2	3	3

Triple-deck sifter, C type

Model		SFJH140×2C	SFJH153×2C	SFJH140×3C	SFJH153×3C	SFJH180×2C	SFJH210×2C
Capacity (t/h)	Pellet	14-18	22-26	14-18	22-26	25-28	27-30
	Mash	12-16	18-23	12-16	18-23	20-25	23-28
Power (kW)		4.0	4.0	5.5	5.5	7.5	7.5

FAMSUN Extrusion Equipment

H Series Aquafeed Twin Screw Extruder



Application Field

The H series twin screw extruder is suitable to variable floating, sinking and slow sinking aquafeed production. This series can match the clients' requirement of micro floating and sinking aquafeed with 0.6 mm and 0.8 mm die hole, low starch level combined high protein and fat level formula of largemouth bass feed and macro size pellet of grouper feed. Vacuum system and pressure chamber are options to control bulk density. Quality of extrudates is improved with stable performance of equipment and fully-automatic control system.

Particular Function

High capacity and low energy consumption

All new H series twin screw extruder applies 20:1 as the ratio of screw length by diameter and steady-state screw configuration. Therefore high capacity of floating and sinking feed production can be pursued. For sea water floating feed production, the capacity can be increased 15-20% and energy consumption per Mtons can be reduced to 23-25kW.h/Mton comparing the equipment of competitors in Chinese market.

Wide range and low cost

H series can handle variable formulas like high, middle and low level recipe of floating, sinking and slow sinking aquafeed and 0.6 mm floating feed and 0.8 mm sinking feed micro pellet production. In recent years, with innovation of technology, H series twin screw extruder can fix the issue of production with low level formula which contains low level of starch and high level of protein and fat, like poor water stability and homogenous, poor apparent shape. The digestibility is improved with the pellet produced by H series twin extruder.

Homogenous of pellet

Pressure before die has been optimized and homogenous of pellet has been improved with advance technology of screw geometry, steady screw configuration, high accuracy screw and barrel sleeve and twin die discharging technique with patent protection.

Better degree of gelatinization

High efficiency 3 layer pre-conditioner (patent No. CN200920283434.1) and particular liquid injection structure (patent No. CN201020207193.5) is implemented to guarantee mixture of moisture and raw material. Using EDEM to simulate the areas organization and optimize order of paddles, to increase fill ratio, extend residence time and improve performance of preconditioner.

More stable and safety

More stable is pursued with American and European standard gearbox contains the fifth level high accuracy gears, international first-class brand bearing, oil sealing and high efficiency transmission. Working life of screw is extended to 50,000 Mtons with new style wear-proof material.

Optional Function

Bulk Density Control System

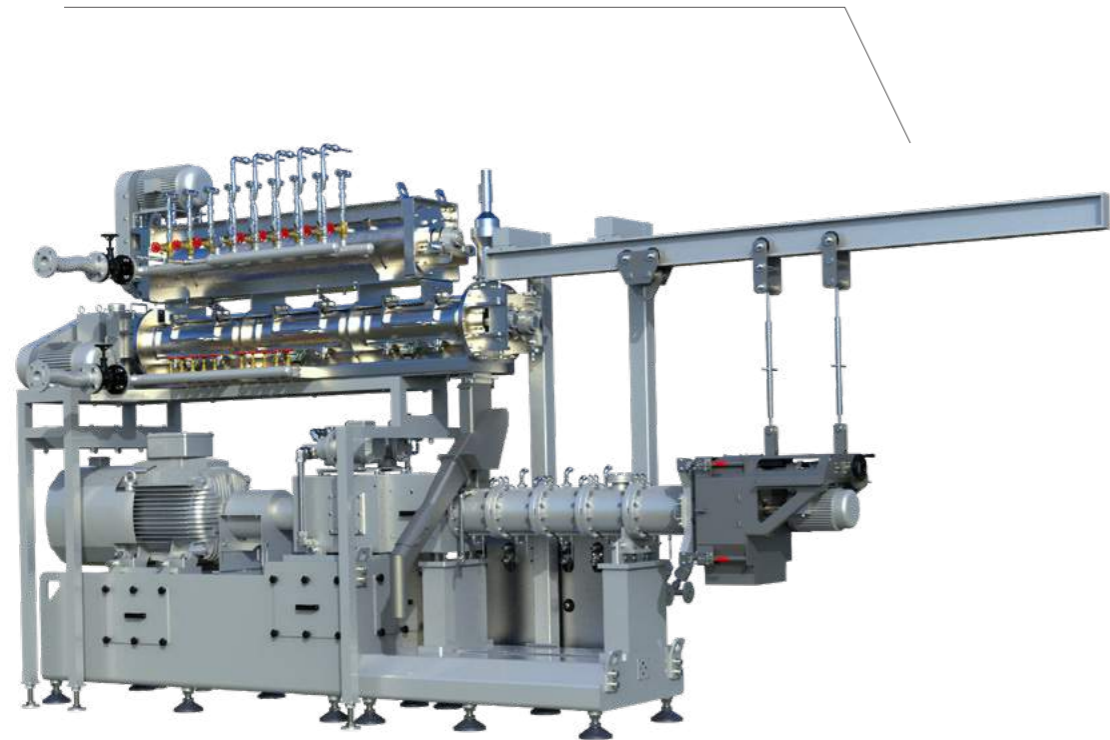
Either pressure chamber and vacuum system can be chosen to produce high bulk density required pellet (sinking aquafeed, etc) and increase the bulk density and capacity, improve the appearance of pellet significantly.

Fully-automatic control system

Easily operation with fully-automatic control system can reduce labor cost. All the data are recorded to reduce the dependency of operator. Advanced control units can guarantee stable, accurate and sensitive production.

Object	H156	H176	Note
Main power (kW)	315/355	560/630	VFD
Feeder power (kW)	3.0	5.5	VFD
DDC power (kW)	15+37	15+37/18.5+45	
Cutting motor power(kW)	7.5	11	VFD
L/D	20:1	20:1	
	10~12	15~20	Floating feed Φ4.0
Capacity (t/h)	4~6	6~8	Floating feed Φ0.8
	6~8	10~14	Sinking feed Φ4.0

H66 Twin Screw Extruder



Scope of application

H66 twin screw extruder is mainly used for the production of floating feed with 0.4 ~ 0.6 mm die hole size and sinking micro pellet with 0.4 ~ 0.8 mm die hole size. It can also be used in low starch, high protein and high fat formula like California Bass feed, large size grouper feed, pet food and other various needs. It can be equipped with two kinds of Density Control System: vacuum DCS or pressure DCS. With the intelligent control system, it can ensure the stability of the equipment and improve the quality of extruding products.

Performance characteristics

High capacity with low energy consumption

The new H-series twin-screw extruder adopts 20:1 length diameter ratio and steady-state screw configuration technology. The floating and sinking aquatic feed can give full play to its superior production capacity to produce marine floating fish feed. The production capacity is 15 ~ 20% higher than that of domestic similar extruders, and the power consumption per ton is as low as 23 ~ 25kW.h / t;

Wide processing range with high FCR

The processing range covers all kinds of high, medium and low ends formula of floating feed, sinking feed and slow sinking feed; It can produce 04 ~ 0.6 mm die hole size floating feed and 0.4 ~ 0.8 mm die hole size sinking feed; It can also improve the feeding rate and digestion utilization rate of aquatic animals, and improves the growth performance of aquatic animals;

Pellet uniformity

Full kneading and stable screw configuration, high-precision screw and inner sleeve, and patented dual die discharging device are adopted to optimize the pressure distribution before the die and ensure uniform pellets;

Well cooking ability for extruding pellets

It is equipped with high efficient three-axis pre-conditioners (Patent No.: cn200920283434.1) and its unique water vapor co-adding structure (Patent No.: cn2010207193.5) to ensure the well mixing of water, vapor and materials. EDEM software simulation technology is used to separate the function area of the conditioner, optimize the blade contribution, improve the material fill rate, extend the effective conditioning time and improve the conditioning effect;

Stable operation, safe and reliable, low failure rate

The gearbox is designed and manufactured according to European and American standards, which adopts 5th grade high-precision gears. It is also equipped with world-top-class brand bearings and oil seals to ensure high transmission efficiency and stable & reliable operation. The service life of the new type of wear-resistant alloy screw is more than 50,00h.

Optional Functions

Density Control System

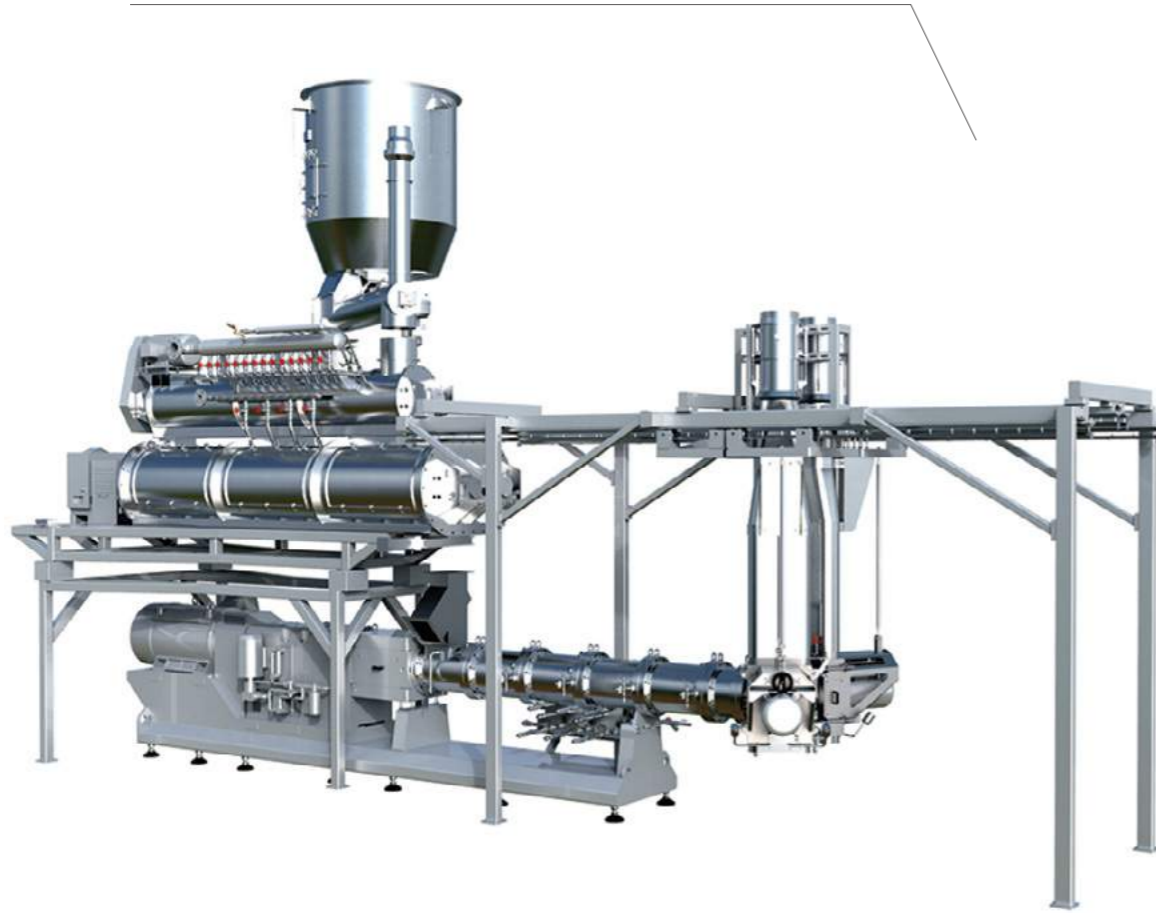
Pressure DCS or vacuum DCS are mainly used for the production of high bulk density extruding materials (such as sinking aquatic feed, nutritional rice, etc.), which can effectively improve the bulk density of materials, or enhance the capacity of the extruder, and improve the appearance of pellets;

Automatic control system

The automatic control system simplifies the operation and reduces the labor intensity; All data are recorded to minimize the influence of operators on the quality of extruding products; International advanced control components ensure the stability, accuracy and sensitivity of the control system.

Extruder Type	Die hole size (mm)	Capacity (kg/h)
SJPS 66x2	0.4	220-280
SJPS 66x2	0.5	500-550

R140 Twin Screw Extruder



Application Range

R140 Twin Screw Extruder is primarily applied on pet food production.



Superiority

Bulk density online control, high recipe adaptability

R140 TSE adopts bulk density online control. The bulk density and expansion ratio of pellet can be adjusted online, which can control the pellet to be either floating or sinking. In the meanwhile, R140 is agile enough for processing floating, sinking and slow sinking aquafeed. R140 can handle not only 1.0mm die hole floating pellet, but also 0.8mm die hole sinking pellet.

Zero-Head-Waste during precondition

R140 applies high shear rate preconditioner, which has the features of zero waste, high shear, first in and first out, adjustable preconditioning time, low coefficient of variation, high meat slurry/liquid addition and no steam leakage. With the zero-waste preconditioning technology, the scrap out pf extruder can also be controlled under 30kg.

Automatic control system with intelligent modules

R140 highly automatic control system with intelligent modules. Standard modules like automatic feeding, one button pre-heat, on button preconditioning, one button start, SME online control, one button shut down and one button flush. Therefore highly automatic control can be achieved.

Pneumatic conveyor system along vertical direction

Applies vertical pneumatic conveyor system to provide more operating space and easier operation process. Environment friendly without pellet or steam leakage.

Stable and safety operation with low failure rate

R140 includes European gearbox, high accuracy gear, imported high quality bearing and oil seal, advanced gearbox design and processing control technology. With torque limiter, stable and safety operation can be implemented.

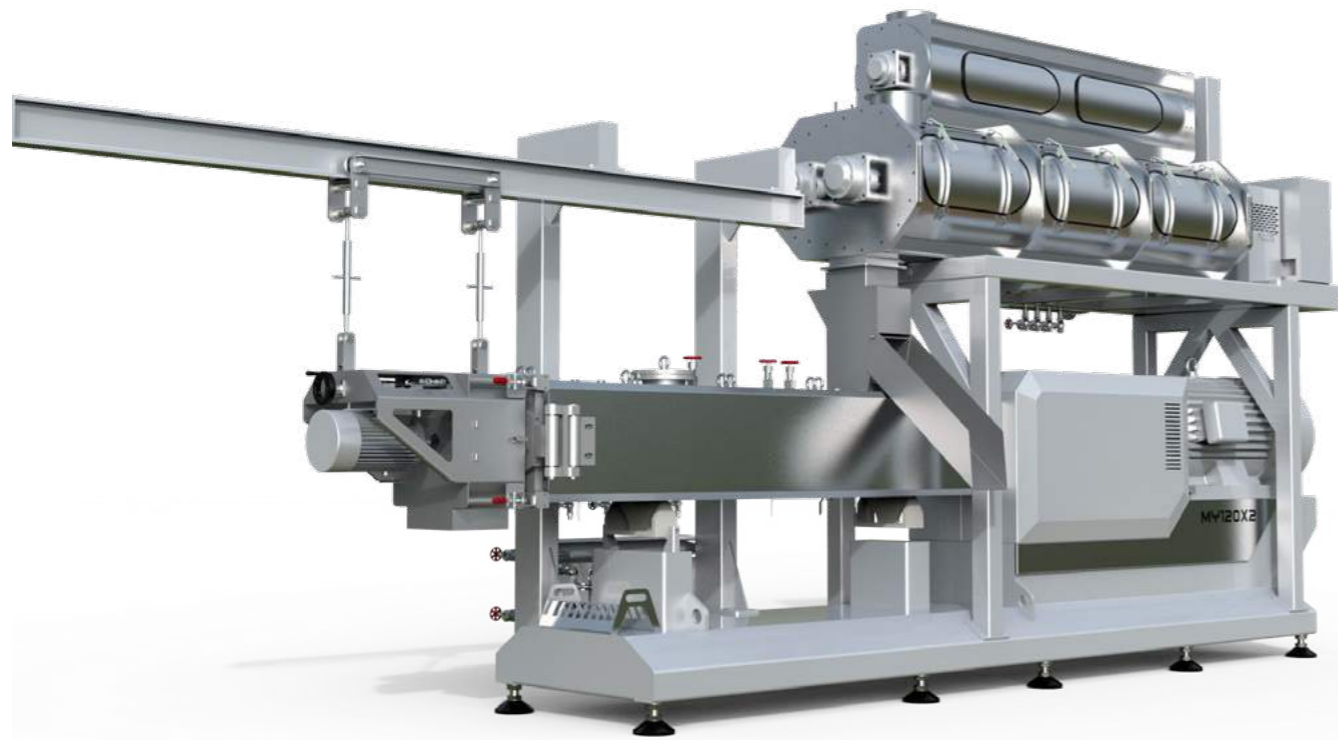
Technical Parameters

Object	Model	Material	Power
Motor	R140		250kW/315kW
Triaxial preconditioner	SPTZ2800	SS	15 kW +30 kW
Feeder	TWLL17	SS/CS	1.5 kW
Feeding bin	TXLP120	SS/CS	2.2 kW
Plumbing rack	MYGL140		

Capacity

250kW Moto	Floating (≥3.0mmpellet)	6-8t
315kW Motor	Floating (≥3.0mmpellet)	8-10t
	Petfood (≥3.0mmpellet)	5.0~7.0

FAMSUN SJPS Series Twin-Screw Extruder



Highly efficient extruder for aquafeed, food, pet food and raw material treatment, especially sticky formulations.

Easy operation

PLC and touch screen for convenient control; by-pass provided for avoiding blockage; easy operation, precise and reliable.

High efficiency

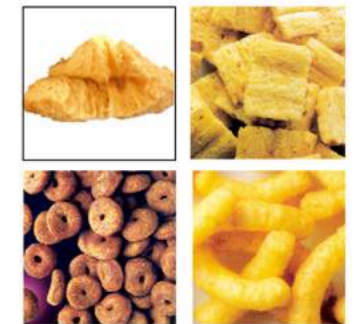
Optimal chamber groove and screw flight profiles, minimum SME input; efficient DDC conditioner and jacketed barrel with stabilized and facilitated extrusion, maximum energy utilization; unique suspending cutter, adjustment without down time.

More flexibility

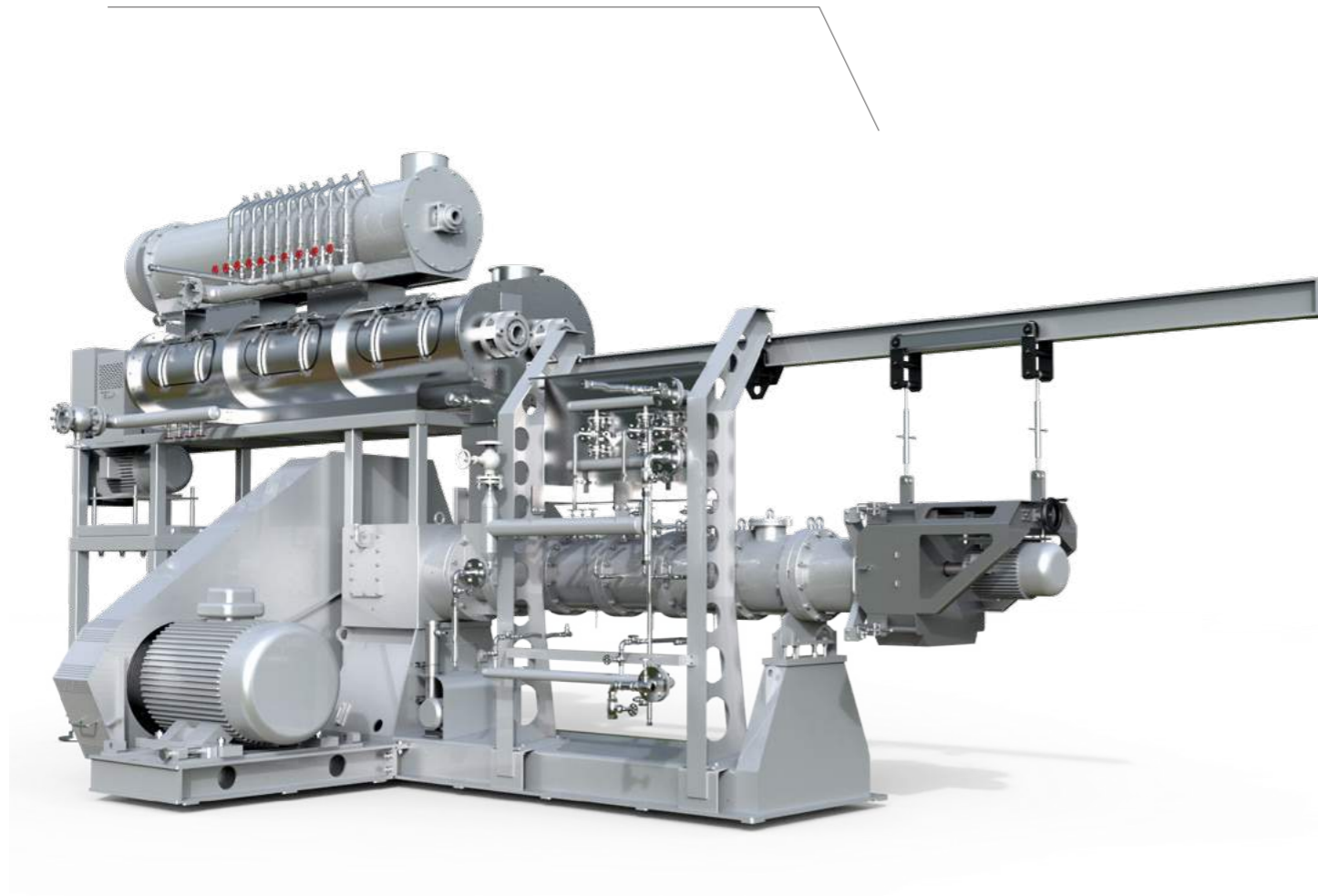
Modularized barrel and screw structure with many add-ons, adaptable to varied high-fat or -moisture formulations; controllable temperature, pressure and density, minimizing reconfiguration acquired.

Model	SJPS90×21	SJPS120×21
Screw Dia. (mm)	100	132
L/D	20:1	16:1/20:1
Main drive (kW)	110/132	160/200
Conditioner power (kW)	15+22	11+18.5
Capacity (t/h)	Floating fish feed	2.0~3.5
	Pet food	2.0~3.5
	Sinking fish feed	1.5~2.0
	5.5~7.5	3.0~5.0

Note: The above data is based on reference formulas that: starch≥16%, protein≥30%, oil and fats in 4~6%, fiber≤6%, and die hole diameter≥4.0mm. One influence factor of capacity is the content difference of ingredients.



FAMSUN SJPS Series Single-Screw Extruder



High-efficient extruder for aquafeed, food, pet food and raw material treatment.

Simple operation

Leading extrusion technology and intelligent control; by-pass for avoiding blockage; simple operation, precise and reliable.

High efficiency

DDC conditioner and optimal modular extruder screw & chamber, minimum Specific Mechanical Energy (SME) input; recoverable thermal energy, maximum energy utilization; unique suspending cutter, replacement and adjustment without downtime.

Wide production range

Controllable temperature, pressure and density thanks to modularized design and many add-ons, minimizing reconfiguration acquired.

Satisfying product quality

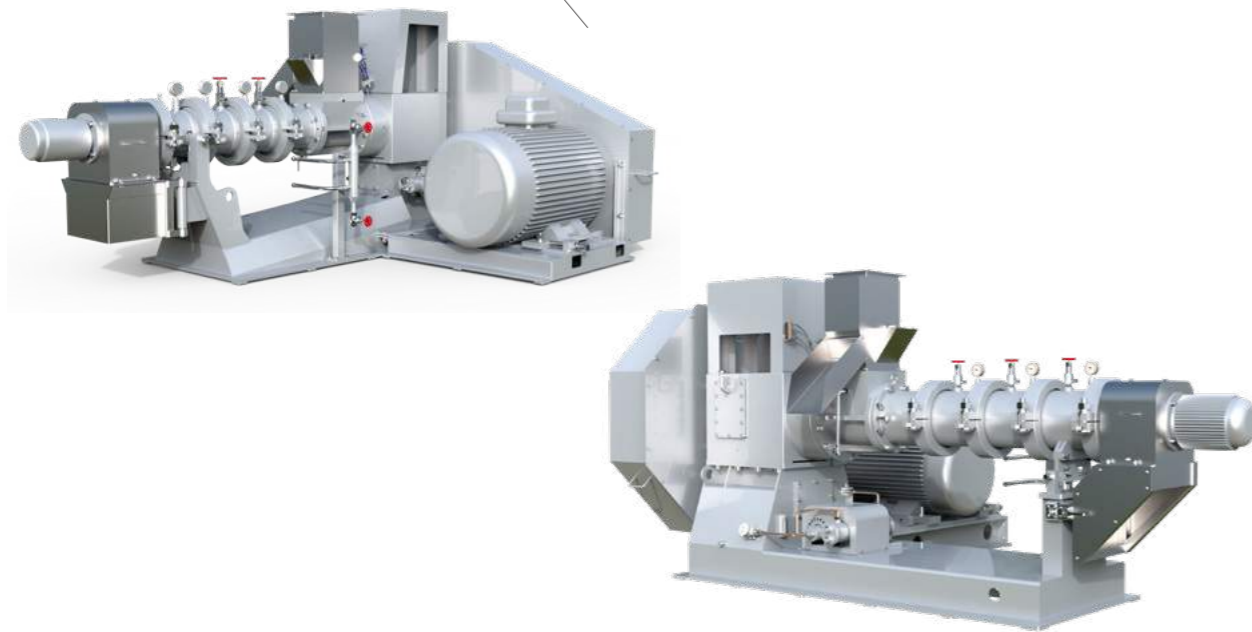
Uniform extruded pellets with high fat absorption, unique visual appearance, environmental friendly and sustainable.

Model	SJPS135	SJPS165E	FE220(SJPS215C)	
Screw dia. (mm)	135	165	215	215
L/D	13.2:1	13.2:1	13.2:1	13.2:1
Main drive (kW)	90/110	160	250	315
Conditioner (kW)	15	11+18.5	15+22	15+30
Capacity (t/h)	Floating fish feed	1.8-2.2	4.5-6.0	8.0-10.0
	Pet food	1.8-2.2	4.5-6.0	8.0-10.0
	Sinking fish feed	1.2-1.5	2.2-3.5	4.0-6.0

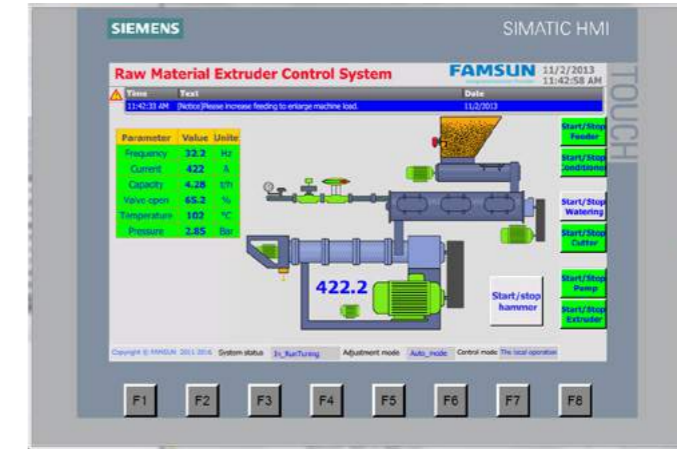
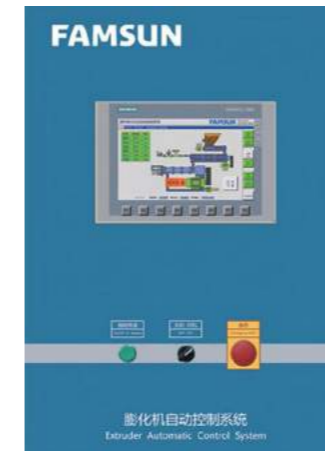
Note: The above data is based on reference formulas that: starch≥16%, protein≥30%, oil and fats in 4-6%, fiber≤6%, and die hole diameter≥4.0mm. One influence factor of capacity is the content difference of ingredients.



FAMSUN TPHE200/260 Raw Material Extruder



FAMSUN Control System for Raw Material Extruder



Versatile extruder specialized for raw material treatment in feed and grain industry.

Wide applications

Suitable for the extrusion of raw materials such as full-fat soy, corn flour, soybean meal, rice, rice bran, wheat, etc.

Easy operation

META system for optimum and convenient control; by-pass provided to avoid blockage; easy operation, precise and reliable.

More flexible production

Modular design with optional double- or single- flightscrews, shear locks and die plates (multi-hole or on-line adjustable single hole) for flexible put-together and easy product change.

High efficiency

Efficient conditioner and optimized configuration for desirable product, minimum thermal and mechanical energy input.

Model	Power (kW)	Screw dia. (mm)	Capacity (t/h)	
			Corn	Soy
TPHE200	110/132	200	1.5-2.0	2.5-3.5
TPHE260	250	260	3.0-3.8	4.0-6.0

High plant availability thanks to flexible and reliable control system

Innovation bypass control technology in combination with material interrupt detector and anti-bridging device, fast and accurate localization of material blockage in advance, minimizing downtimes and increasing productivity.

Adjustable process parameters, seamless and flexible integration between automatic and manual operation, maximally optimizing productivity.

Interlock functions on various operating interface considerably prevent error operation, contributing to security processing.

Integrated control system on basis of Siemens S1200 Series PLC and KTP 1000 Series touch-panel, making for low maintenance and top operation reliability.

User-friendly operation via intuitive design

Centralized monitor, visualization of the process and intuitive user operating interface.

Pre-setting job procedure integrates for best possible product quality, thus automatic setting and management of the extruder is available, reducing the workload of operator.

Efficient energy management delivers cost-efficiency

Energy consumption per ton of material can be effectively reduced up to 21%.

FAMSUN PHYE260 Raw Material Extruder



Extruder specialized for corn extrusion.

Excellent product quality thanks to optimal process flow

Angle-adjustable conveying paddles deliver more uniform mixing and higher efficient conditioning. Elaborate process flow functions as sterilization and gelatinization, improved product quality and feed conversion, and absorption characterization, reduced cross-contamination.

Economic alternative for high capacity and low energy consumption

Highest possible production capacity and minimized energy consumption; corn extrusion throughput of up to 4.2 t/h and up to 21% reduction of energy consumption are possible.

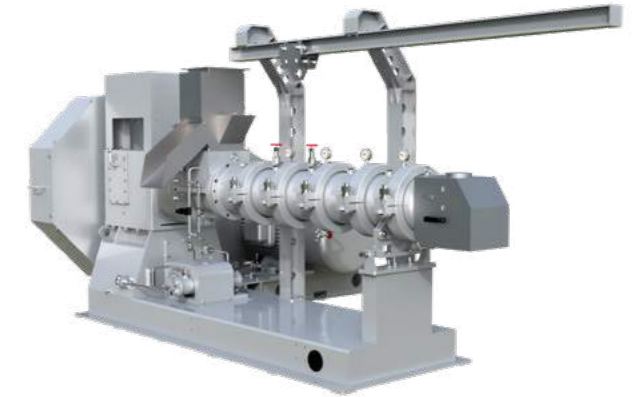
User-friendly operation lies in smart structure design

Innovative rail device for suspending cutter device enables gap adjustment at all time, easy and fast operation, reduced workload of operator.

Unique three bearings arrangement concept and cyclic oil lubrication system etc. guarantee longer service life, with minimized maintenance requirements.

Model	Power (kW)	Screw dia.(mm)	Capacity (t/h)
PHYE260	250	260	3.5-4.2

FAMSUN PHDS260 Soybean Extruder



It is mainly used to process oil-rich raw material such as soybean, rapeseed, peanut, flaxseed and castor seed, etc.

High output and low energy consumption

With a L/D ratio of 8:1 and the optimum configurations of screws and discharge barrel, extrusion production of PHDS260 is facilitated and shows distinguished advantage in processing high-protein and oil-rich material. For full-fat soybean meal extrusion, the capacity is increased by 20% compared to other extruders, and electricity consumption of one tone product is 26-30 kW·h.

Stable product quality

The soybean exclusive extruder can eliminate anti-nutritional factors in raw material thoroughly while control urinary enzyme protein activity within 0.1. With soluble protein in product up to 78-85%, the extruder can maximize raw material utilization. And thanks to the "low temperature extrusion", Maillard Reaction is diminished effectively to improve the utilization of amino acid and vitamin.

Reliable running and easy operation

Core bought-in components are all sourced from world-class brands to ensure the safety and stability of operation. The new fabricating technology has extended the service life of screws by 2.5-3 times, and that's a cost saving advantage. With a patented adjustable discharge device, product quality could be controlled in a real time.



Screw made of new wear-resistant alloy



Real time adjustable discharge device



Extruded soybean

Options

Automatic control system

Simplified operation, low manual labor intensity; All data is recorded to reduce the influence of human factors on extruded product quality; Globally advanced control components to ensure the stability, accuracy and sensibility of the control system.

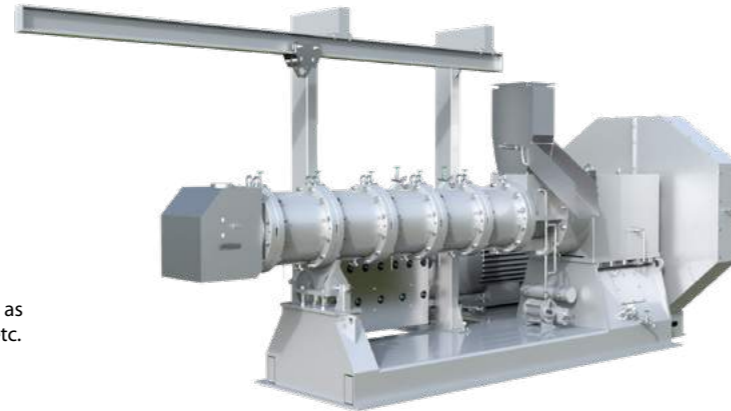
Hydraulic discharge device

Optional hydraulic discharge device provides easy access and reduces manual labor intensity.



Item	Parameter	Note
Screw diameter (mm)	260	
Main motor power (kW)	200/250	
Anti-bridging bin power (kW)	3	TXLP120B (recommended)
Feeder power (kW)	1.5/2.2	
Conditioner power (kW)	15+18.5 18.5+18.5	MDTZ260+SCTZ33, for main motor power of 250kW SCTZ33×2, for the production of high-end product
Oil pump motor power (kW)	0.75	
Capacity (t/h)	7.5-9 9.5-11	Urease activity 0.01-0.1, main motor power 200kW Urease activity 0.01-0.1, main motor power 250kW
Power consumption (kW·h/t)	25-30	

FAMSUN PHDS320 Soybean Extruder



It is mainly used to process oil-rich raw material such as soybean, rapeseed, peanut, flaxseed and castor seed, etc.

High output and low energy consumption

With a L/D ratio of 9:1 and the optimum configurations of screws and discharge barrel, extrusion production of PHDS320 is facilitated and shows distinguished advantage in processing high-protein and oil-rich material. It is the first large-scale soybean extruder in China market with a maximum capacity of 20t/h.

Stable product quality

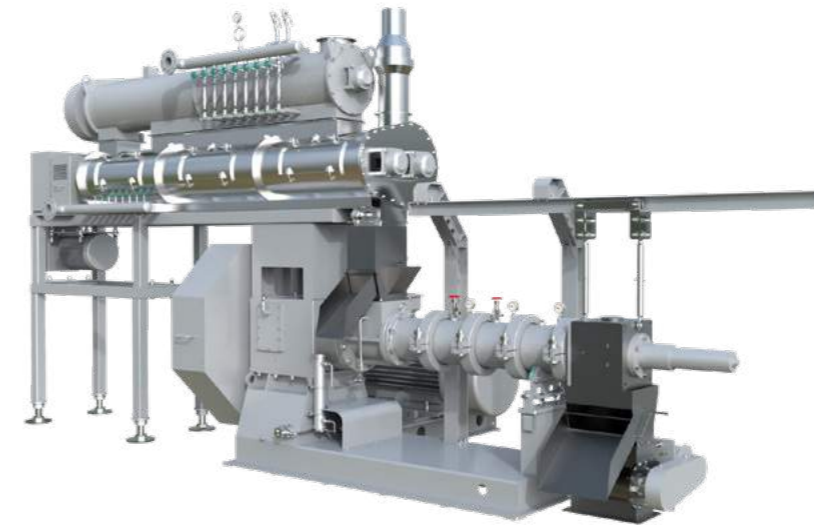
The soybean exclusive extruder can eliminate anti-nutritional factors in raw material thoroughly while control urinary enzyme protein activity within 0.1. With soluble protein in product up to 78-85%, the extruder can maximize raw material utilization. And thanks to the "low temperature extrusion", Maillard Reaction is diminished effectively to improve the utilization of amino acid and vitamin.

Reliable running and easy operation

Core bought-in components are all sourced from world-class brands to ensure the safety and stability of operation. The new fabricating technology has extended the service life of screws by 2.5-3 times, and that's a cost saving advantage. With a patented adjustable discharge device, product quality could be controlled in a real time.

Item	Parameter	Note
Screw diameter (mm)	320	
Main motor power (kW)	400/450	
Anti-bridging bin power (kW)	5.5	TXLP180B (recommended)
Feeder power (kW)	5.5	TWLL31
Conditioner power (kW)	22+30	SCTZ39+SCTZ45, for main motor power of 400kW
	30+30	SCTZ45+ SCTZ45, for the production of high-end product
Oil pump motor power (kW)	0.75	
Capacity (t/h)	20	Urease activity 0.1-0.2
	18-20	Urease activity 0.05-0.1
	16-18	Urease activity 0.01-0.05
Power consumption (kW·h/t)	20-25	

FAMSUN SXPS Series Animal Feed Extruder



It is mainly used for livestock and poultry feed production, especially for the production of high quality piglet feed with the full-extrusion low-temperature pelleting technology.

Controllable gelatinization degree

Thanks to the hydraulic discharge system, starch gelatinization of finished product can be controlled within 40-75% on line.

High output and low energy consumption

With a L/D ratio of 7:1 and the optimum configurations and hydraulic discharge system, the capacity of SXP5260 is increased by 20% compared to other extruders, and electricity consumption of one tone product is reduced by 15-20%.

Reliable running and easy operation

Core bought-in components are all sourced from world-class brands to ensure the safety and stability of operation. The new fabricating technology has extended the service life of screws by 2.5-3 times, and that's a cost saving advantage. In addition, the a hydraulic discharge system also helps to increase operation convenience and reduce labor intensity.

Item	Parameter	Parameter	Note
Screw diameter (mm)	200	260	
Main motor power (kW)	132	200/250	
Anti-bridging bin power (kW)	2.2	2.2	TXLP120B (recommended)
Feeder power (kW)	1.5/2.2	1.5/2.2	
Conditioner power (kW)	7.5+5.5+7.5	7.5+7.5+7.5	MUTZ600JCJ+STZL+MUTZ600JCJ conditioning system
Oil pump motor power (kW)	0.75	0.75	
Crusher motor power	5.5	5.5	
Hydraulic system power	3	3	
Capacity (t/h)	4-5	8-10	Starch gelatinization degree: 60-70%
	5-6	10-12	Starch gelatinization degree: 50-60%
Power consumption (kW·h/t)	22-25	18-22	

FAMSUN SMTZ50B Density Management System (DMS)

It is a flexible add-on of FAMSUN extruder to produce high bulk density products such as sinking aquafeed and nutritive rice.



A flexible and effective add-on

Steam extracted into the DMS takes both moisture and thermal energy away from the feed mash and helps to control the temperature, moisture and pressure of extruding barrel in a reasonable range before discharging, which eventually achieves product of high bulk density and high gelatinization as well as high output. The DMS can be added onto both FAMSUN single-screw and twin-screw extruders.

High bulk density and good product appearance

With the DMS, the bulk density can be controlled within 50-80g/l to achieve finished product of a beautiful dark color, smooth and uniform appearance.

Energy Recovery and Environmental Friendly

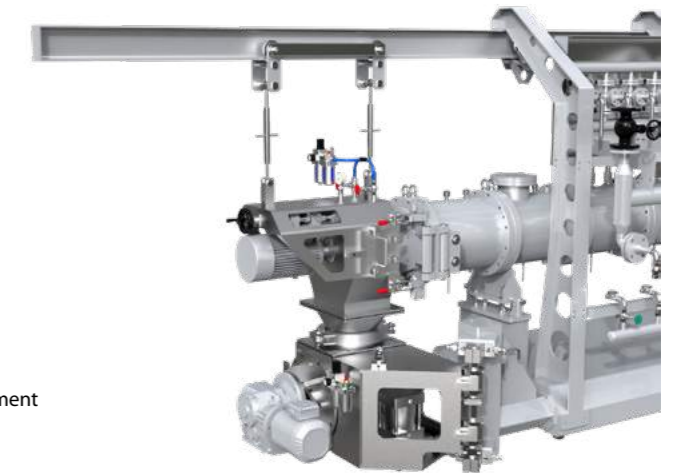
Steam extracted into the DSM then is sent to the conditioner for conditioning production, which contributes to better conditioning quality and energy efficiency. Emissions such as fish meal odor or particles now are well controlled.

Item	Parameter	Note
Screw feeder power (kW)	1.5/3.0	VFD
Water-ring vacuum pump (kW)	5.5(50hz)/8.5(60hz)	
Screw pump (kW)	2.2	VFD
Vacuum degree (Mpa)	0~ -0.07	

Pressure Chamber Density Control System

The main application fields of SMTZ380 Pressure Chamber density control system is high bulk density required aquafeed extrusion processing, as sinking crab feed etc.; The system must be operated match with extruder. The bulk density and capacity can be increased by matching this system. The bulk density of sinking aquafeed can be enhanced more than 50 g/L. And the appearance of extrudates can be obtained (puce and smooth).

High equipment stability, brilliant production quality
 No squeezing damage, no pellet deformation
 Good air sealing, long service life of key accessories
 Easy operation, convenient maintenance
 Variable frequency motor, suitable for variable operation requirement



High equipment stability, brilliant production quality

High equipment stability, bulk density can be controlled more than 680g/L;
 Uniform appearance, color and lustre;
 Wide application fields, suitable for variable sinking recipe.

No squeezing damage, no pellet deformation

Large volume of air seal device, decrease the fill rate, and reduce the squeezing deformation
 Professional design of inlet/outlet, effectively avoid squeezing damage.

Good air sealing, long service life of key accessories

Wear-resisting elastics material for sealing blade, long service life and convenient maintenance;
 Good air seal around shaft-end, convenient replacement;
 Additional TRELLEBOGR rotating air seal, better air sealing performance.

Easy operation, convenient maintenance

All-purpose cutting device for both floating feed and sinking feed, avoid changing labor;
 Anchor ear connection between cutting device and air seal device, convenient replacement;
 Rotatable air seal device, up-and-down movable air cylinder, easy operation.

Variable frequency motor, suitable for variable operation requirement

All-purpose cutting device for both floating feed and sinking feed, avoid changing labor;
 Anchor ear connection between cutting device and air seal device, convenient replacement;
 Rotatable air seal device, up-and-down movable air cylinder, easy operation.

SMTZ380 matching extruder	SJPS120×2	H156	Note
Motor power of cutting device/kW	4	5.5	Variable frequency motor
Motor power of air seal device/kW	3	3	Variable frequency motor
Normal working pressure/MPa	0.1-0.25	0.1-0.25	
Capacity of matching extruder t/h	4-6	6-8	Diameter of Die hole ≥ Φ4.0
Installation	Hoisting of cutting device Post rotation of air seal device		Convenient operation

FAMSUN Drying, Cooling and Stabilizing Equipment

FAMSUN MJ Gas Dryer



1. FAMSUN MJ Gas Dryer offers profitable drying for aquafeed, food and dry petfood production.
2. Heat for drying is provided by gas direct-fired burner, which is energy effective, cost saving and friendly to environment. The gas required for drying carp feed of 3-6mm pellets is 11-14m³/t.
3. Adjustable and controllable product distributed speed, drying time and air volume, especially the temperature control of individual drying zone, all together bring about uniformly and thoroughly drying of pellets without damage. Moisture deviation for finish products is controlled within ±0.5%.
4. The dryer is designed based on NFPA86 regulations and Europe and America environmental sanitation standards.
5. Thanks to the motor direct-drive circulating fans and reasonable circulating channels, and improving heat utilization measures, the dryer is designed in a more compact structure.
6. Outsourcing components such as burner, valves, check and interlock are all from world's leading brands, that makes the system run stable and reliable.
7. With modular design and large access doors, installation and maintenance is simple, quick and easier.

MJ Gas Dryer configuration

Content	Standard Configuration	Optional
Conveying belt structure	Crawler plate (stainless steel)	Screen mesh
Machine parts that directly contact with product is made of	Stainless steel	
The outer seal panel and door panel are made of	Stainless steel	Carbon steel
Reducer	SEW	The same grade brand
Bearing	FAG	The same grade brand
Fan	European and American brands	High-end brand made in China
Gas direct-fired burner and valve	World's leading brand	
Supporting feet height	750mm	Other height

MJ Gas Dryer selection reference

The dryer model	Floating fish feed, die hole: φ3-6mm	Sinking fish feed, die hole: φ3-4mm	Petfood, die hole: φ3-6mm
M4 (Drying section length 4m)	3.5~4.5	1.5~2.0	4.8~5.2
M6 (Drying section length 6m)	5.0~6.0	2.0~2.5	5.5~6.5
M8 (Drying section length 8m)	7.0~8.0	3.0~4.0	7.5~8.5
M11 (Drying section length 11m)	10.0~11.0	4.0~5.5	10.5~11.5
M14 (Drying section length 14m)	12.0~13.0	5.5~7.0	12.5~14.0
M20 (Drying section length 20m)	18.0~19.0	8.0~10.0	18.5~20.0

FAMSUN SDZB (MJ) Series Dryer



The MJ steam dryer of which the design is directed by Famsun's USA Research and Design Institute, meets the drying requirements of various pelleted aquafeed and pet food products.

Low moisture deviation

≤±0.5%, Servo motor control of uniform spreading; advanced airflow design to achieve excellent air distribution across conveying belt; high opening percentage of belt bedplates; Adjustable lump breaker to toss and turn products twice.

Low energy consumption

180-220kg/ton, Low temperature drying, most of the hot air is involved in circulation; Multi-temperature zone design allows independent and accurate control of temperature and air volume in each zone; steam coils internally installed and external doors filled with insulation to achieve excellent heat preservation.

Stable performance

Famous brand reducers and bearings; famous brand direct-connected motor circulation fans and steam coils; SST belt bedplates and durable; Belt abnormal stop or reversal with alarm; Fine screws with sensors to prevent from block.

Easy maintenance

Each external door can be opened and access to maintenance conveniently; Quickly replace the filter screen without stopping production

Sanitation design

Plenum bottom fine screws besides feed end and tail end fine screws; Each layer belt with automatic cleaner.

High automation

Start and stop with one key; Temperature and humidity automatic control; Formula storage; Energy saving model.

Dryer model	4mm-6mm die size, floating aquafeed pellets(ton/hr)
SDZB3000-4(M4)	3.0~3.5
SDZB3000-5(M5)	3.5~4.0
SDZB3000-6(M6)	4.0~5.0
SDZB3000-8(M8)	6.5~7.0
SDZB3000-10(M10)	7.5~8.5
SDZB3000-11(M11)	9.0~9.5
SDZB3000-12(M12)	9.5~10.5
SDZB3000-14(M14)	11.0~12.0
SDZB3000-16(M16)	12.5~13.5
SDZB3000-18(M18)	14.0~15.5
SDZB3000-20(M20)	16.0~17.0

FAMSUN SKLN Series Counterflow Cooler

Widely used for cooling granular feed.



Compact structure, small space occupied.
Octagonal cooling bin, eliminating death corner.
Reciprocating grid for smooth and uniform discharge flow.
Little maintenance required and low energy cost.

Model	SKLN16×16	SKLN19×19	SKLN22×22	SKLN24×24	SKLN28×28
Power (kW)	0.75	1.5	1.5	1.5	1.5+0.75
Capacity (t/h)	7.5	10	10-13	13-18	18-23

FAMSUN SLNF Series Tipping Type Counterflow Cooler (Type A)



Suitable used for cooling granular feed, especially the extruded pellets

Compact structure, small space required.
 Octagonal cooling bin, eliminating death corner.
 Hydraulic flexible driven tipping plates for smooth and controllable discharging rate.
 Little maintenance required and low energy cost.

Model	SLNF19×19A	SLNF22×22A	SLNF24×24A	SLNF28×28A	SLNF32×32A	SLNF36×36A
Power (kW)	1.5	3	3	3+0.75	5.5+0.75	5.5+0.75
Capacity (t/h)	10	10-13	13-18	18-23	25-30	30-35

FAMSUN SLNF28×28B Swivel Counter flow Cooler



It is upgraded for highly effective cooling of feed pellets, especially for extruded pellets.

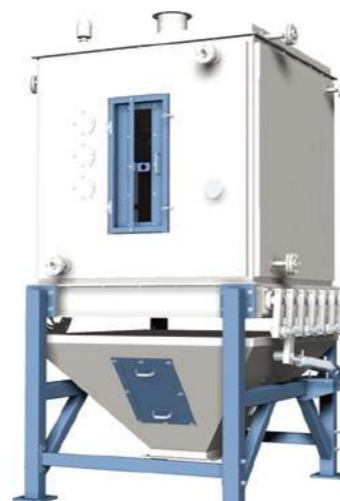
Compact structure, small space required.
 The new designed distributor together with a spreader and counterflow cooling air contribute to uniform, thoroughly cooling and reasonable water reduction.
 Thanks to the new structure of swiveling plate and the hydraulic driving system, discharging is smooth and controllable without residues and fines.
 The cooler requires little maintenance and low energy input.

FAMSUN SWDB Series Swing Type Pellet Stabilizer

Effective stabilizer to improve water stability of aquafeed pellets.

Steam pipes for heat preservation, uniform heating.
 Hydraulic controlled tipping plates, controllable and smooth discharge.
 Large access door in front side, ease of cleaning and maintenance.

Model	SWDB14×14A
Efficiency Volume (m ³)	1.5
Capacity (t/h)	2-3
Heat Preservation Time (min)	30
Power (kW)	1.5+0.75



Model	Output, t/h	Pellet diameters			
		2-4mm	5-7mm	8-11mm	12-16mm
SLNF28X28B	23	18	16	14	
Air volume, m ³ /h	1200	1400	1500	1600	

Note: 1. Referenced bulk density: 0.64kg/L. Fines content of incoming product: 5%.
 2. Product temperature ≤(ambient temperature +5°C), moisture reduction: 2-3%.

FAMSUN Liquid Coating System



FAMSUN YPLV Series Continuous Liquid Coater

Fully automatic control, easy operation;
Short-time overload function, adaptable to varied production capacity;
Frequency inverter for volumetric and gravimetric material flow control, precise liquid adding rate and evenly coating.

Model	Capacity (t/h)	Power (kW)
YPLV80	0.5-8	1.1+1.2
YPLV100	1-15	1.1+3
YPLV135	10-25	1.5+5.5

FAMSUN PTZL Series Vacuum Coater



It is mainly used for adding expensive liquids of edible oil or fat, enzyme, vitamins, antioxidants, amino acids onto feed pellets, especially aquafeed, after drying/cooling.
Highlights: strong vacuum creation and control ability, high mixing homogeneity, low product damage and free of contamination.

Model	PTZL2000	PTZL3000	PTZL4000	PTZL5000
Screw rotor power(kW)	15	22	22	37
Vacuum pump (kW)	22	22	22	22
Capacity (t/h)	4-8	6-12	12-14	15-20
Working vacuum (mbar)	-800mbar to atmosphere (adjustable)			
Limited vacuum (mbar)	-950mbar			
Liquid addition	1%-36% of dry material weight			
Batches per hour	10 batches			

FAMSUN PTCL Series Vertical Coater



The coater is mainly used for adding expensive liquids of edible oil or fat, enzyme, vitamins, antioxidants, amino acids onto feed pellets, especially aquafeed, after drying/cooling.
It is designed to satisfy the liquid addition demand of 1-6%.

Model	PTCL2000	PTCL3000
Screw rotor power(kW)	15	22
Capacity (t/h)	8-10	10-15
Liquid addition	1%-6% of dry material weight	

FAMSUN Proportioning System

FAMSUN LCS Proportioning System

Computer and PLC control, accurate batching and reliable performance.
Possible of including 1-4 scales, flexible combination if required.
Good for improving production capacity and operation reliability.
Widely adopted in feed, flour, fertilizer and cement industries.

Weighing range (kg)	50, 100, 250, 500, 1000, 2000, 3000, 4000
Weighing precision	static 0.1% FS, dynamic 0.3% FS



FAMSUN Micro Proportioning System

Computer and PLC control, accurate batching and reliable performance.
Possible of including 1-4 scales, flexible combination if required.
Good for improving production capacity and operation reliability.
Applicable for premix or supplement batching.

Weighing range(kg)	10-200
Weighing precision	static 0.03% FS, dynamic 0.05% FS



FAMSUN Bagging Equipment

FAMSUN LCS Series PC-Control Quantitative Bagging Machine



With the unique anti-vibration device, weighing precision can be guaranteed under high packing speed. Key components from world's leading brands to ensure long time stable running. It can realize automatic zero calibration. Gate type feeder, simple structure and easy maintenance. It is applicable for packing granular product of good flowability.

Model	ZDC50	Model	ZSC50
Weighing range (kg)	20~50	Weighing range (kg)	20~50
Packing speed (bag/h)	400~600	Packing speed (bag/h)	500~900
Hopper volume (m ³)	0.12 (Finite volumer is 96L)	Hopper volume (m ³)	0.12 (Finite volumer is 96L)
Scale value displaying (g)	10	Scale value displaying (g)	10
Precision	X(0.2)	Accuracy	X(0.2)
Total power (kw)	0.3 (without bag sewing)	Total power (kw)	0.3 (without bag sewing)
Compressed air	0.5~0.6MPa, 20m ³ /h	Compressed air	0.5~0.6MPa, 20m ³ /h

FAMSUN LCS Series PC-Control Quantitative Bagging Machine (Screw Feeder & Double-Hopper Type)



Packing specification (kg)	25, 50
Static Precision (%)	0.1%FS
Dynamic precision (%)	0.2%FS
Packing speed (bag/h)	400~600

With the unique anti-vibration device, weighing precision can be guaranteed even it is under complicated working conditions. External adjustment contributes to easy maintenance. Key components from world's leading brands to ensure long time stable running. In-fly weigh modification, digital calibration as well as automatic zero tracing can be operated real-time. Fast- and slow-feeding are available due to the different screw feeders. It is applicable for packing powdery product.

FAMSUN Intelligent Palletizing Robot



	CP130L	CP180L	CP250L	CP300L
Arm pattern				Vertical multi-joint type
Operation DOF				4
Maximum load capacity (kg)	130	180	250	300
Maximum stroke (°)	Arm rotate(JT1)			±160
	Arm move forward and backward (JT2)			+95~46
	Arm move up and down (JT3)			+15~110
	Wrist rotate(JT4)			±360
Maximum speed (°/S)	Arm rotate(JT1)	140	130	115
	Arm move forward and backward (JT2)	125	120	100
	Arm move up and down (JT3)	130	125	100
	Wrist rotate(JT4)	400	330	250
Working rage (mm)	left and right			1800
	Front and rear			1600
	Upward and downward			2200
Inertia moment (kg.m ²)	50	85	100	140
Maximum transporting capacity (times/h)	2050	1800	1700	1500
Repeatability positioning accuracy (mm)				±0.5
Body weight (kg)				1600

Flexible design and intelligent control

The actions of FAMSUN palletizing robot is swift and flexible, which allows it to handle up to six packing lines at the same time. Reasonable movement track is calculated automatically to achieve high stacking capacity. It can be completely controlled through a touch screen, which is of friendly human-machine interface for easy operation. When the product on packing lines changes, it only needs to input new data to calculate new movement track before starting a new task.

Be excellent in structure and easy in maintenance

The robot requires little installation space, so that it can be placed in a small place for most practical applications. The palletizing robot is outstanding in structure design with simple parts and little failure, which contributes to easy maintenance.

FAMSUN Dust Control Equipment

FAMSUN BLMB Series High Pressure Jet Filter Dust Collector

Features: Design with dust pre-settlement, prolonged service life of filtering bags; quick bag changing device, ease of use.

Application: Dust collection on a dumping pit, a pneumatic conveying system and etc.

Working air-pressure: 0.5-0.7 MPa.

Filtering area (optional): 3m², 6m², 8m², 12m².

Model	BLMB4A	BLMB6A	BLMB8A	BLMB12A
Filtering area (m ²)	3	6	8	12
Air volume (m ³ /h)	360-720	720-1440	1080-2160	1440-2880



FAMSUN TBLM_y Series High Pressure Jet Filter Dust Collector

Features: With flat filtering envelopes, compact structure and small footprint.

Application: Dust collection on conveying equipment.

Working air-pressure: 0.5~0.7MPa.

Filtering area (optional): 5.6m², 10.5m², 17.5m², 25.2m², 36.4m², 53.2m², 75.6m², 109.2m².

Model	TBLM ₈	TBLM ₁₅	TBLM ₂₅	TBLM ₃₆	TBLM ₅₂	TBLM ₇₆	TBLM ₁₀₈	TBLM ₁₅₆
Filtering area (m ²)	5.6	10.5	17.5	25.2	36.4	53.2	75.6	109.2
Air volume (m ³ /h)	675-1350	1266-2532	2100-4200	3024-6048	4333-8736	6414-12828	9115-18230	13116-26332



FAMSUN LNGM Series High Pressure Jet Filter Dust Collector

Features: Cyclone principle adopted for dust separation and settlement, prolonged service life of filtering bags; quick bag changing device, ease of labor.

Application: Dust collection on a dumping pit, a pneumatic conveying system and etc.

Working air-pressure: 0.5~0.7 MPa.

Filtering area (optional): 18m², 30m², 36m², 45m², 54m², 63m², 72m², 90m², 117m².

Model	LNGM18	LNGM30	LNGM36	LNGM45	LNGM54	LNGM63A	LNGM72A	LNGM90A	LNGM117A
Filtering area (m ²)	18	30	36	45	54	63	72	90	117
Air volume (m ³ /h)	2160-4320	3600-7200	4320-8640	5400-10800	6480-12960	7560-15160	8640-17280	10800-21600	14040-28080



FAMSUN TLTSY(G) Series Mobile/Stationary Dump Dust Filter with a sifter

Features: With sifting and dust collecting functions, improving material performance and working environment.

Application: Dust collection on a manual dumping pit.

Working air-pressure: 0.5-0.7 MPa.

Model	TLTSY(G)50	TLTSG100
Filter QTY	4	4
Filter Size	Φ120×700	Φ120×1000



FAMSUN Conveying Equipment

FAMSUN LSUS Series Screw Conveyor

Applicable for the horizontal or a small slope (<20°) conveying of various bulk powdery material;
Large loading capacity, safe and reliable;
Compact structure and flexible inlet and outlet arrangement;
Optional of anti-blockage and speed-detecting alarms.



Model	LSUS16	LSUS20	LSUS25	LSUS32	LSUS40
Capacity (m ³ /h)	5-7	12-14	25-30	58-60	100-120

FAMSUN LSUW Series Screw Feeder

Compact structure and high rotating speed, precisely and evenly feeding;
Special feeding screw ensures material be transport completely, low residues;
Optional of anti-blockage and speed-detecting alarms.



Model	LSUW16	LSUW20	LSUW25	LSUW32	LSUW40
Capacity (m ³ /h)	8-10	18-20	40-45	88-95	150-170

FAMSUN LSUW Series Double-Screw Feeder

Applicable for the horizontal or a small slope (<20 °) Feeding of various bulk powdery material;
With U-shape section, large capacity and easy cleaning;
Equipped with two motors, suitable for motor frequency to realize precisely feeding.



Model	LSUW20×20	LSUW25×25	LSUW32×32	LSUW40×40
Capacity (m ³ /h)	40-42	65-90	160-180	320-330

T Series Bucket Elevator

Model	Head pulley diameter (mm)	Line speed (m/s)	Maximum capacity (t/h)		Maximum lifting height (m)
			Pellet	Meal	
T360	300	1.2~1.8	30	17	40
T400	360	1.3~1.9	45	25	50
T500	400	1.4~2.1	63	36	50
T600	500	1.6~2.3	103	58	50

Note: pellet capacity is based on product with a bulk density of 0.75 t/m³, such as corn; meal capacity is based on product with a bulk density of 0.45 t/m³.



1. Higher capacity with smaller buckets

Innovative new buckets are introduced in the design and construction of T Series Bucket Elevator. Though of smaller volume, the new bucket is able to lift up more products because of its high filling rate, which contributes to compact and flexible machine layout and saves investment in machine purchasing and installation.

2. Lower power consumption

Compared to the old elevator, a motor of smaller power will be able to support the same lifting task of a T series elevator because of the optimized head and lifting speed. An optimized speed together with the return-prevention mechanism can effectively eliminate residues and backflow of material, which not only ensures a high lifting capacity but also reduces power consumption. For meal or light material, the optimized speed can also reduce the impact of air flow on material discharge.

Specifications:	Lifting 67m ³ soybean meal to 35 m high (bulk density: 0.6t/m ³)	
Items compared	Model	Power
Old model	TDTG50/28	7.5kW
T series	T500	5.5kW

3. Bucket of double service life

For a normal bucket, the service life is about 1-2 years. However, the new buckets in FAMSUN T series Elevator can obtain the double service life or more. In some cases, the new buckets, because of thicker and high-resistant layer on their key working surface, can keep service stably for 5-10 years.

Bucket elevator model	T360	T400	T500	T600
Bucket fore-edge thickness	8.5~0.5	8.5~0.5	9~0.5	9~0.5

New high grade plastic bucket

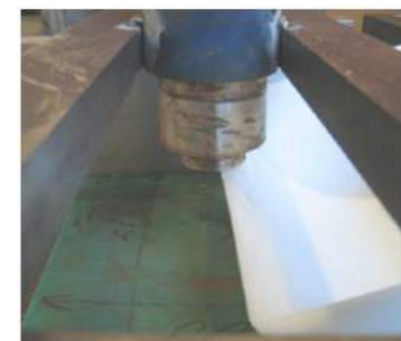
Old plastic bucket



	Impact resistance comparison	Abrasion resistance comparison
Old plastic bucket	Structural damage after 10 times of impact, bucket unserviceable	3.9% abrasion for 30 minutes
New high grade plastic bucket	After 17 times of impacts, the bucket edge deformed with small cracks, and can be put into use after trimming.	2.3% abrasion for 30 minutes

Note:
Impact test procedure: hit the same place of the bucket with the same weight from the same height;
Abrasion test procedure: grind the bucket front edge with the same drum abrasion tester for 30 minutes, and calculate the weight loss.

Impact test site



Abrasion test site



A longer service life ensures reliable operation and less downtime, which eventually contributes to lower maintenance cost.

FAMSUN TDTG Series Bucket Elevator



Compact structure, small footprint.
 Excellent sealing performance and venting in case of dust explosion.
 Optional devices for preventing the sideslip and back-stop to ensure safety and belt alignment.
 Widely used for the vertically conveying of powdery or granular bulk material in grain terminals, port terminals as well as such industries as feed, flour, rice, edible oil etc.

Model	TDTG 36/23	TDTG 36/28	TDTG40/23	TDTG40/28	TDTG50/23	TDTG50/28	TDTG50/32
Capacity(m ³ /h)	20	35	40	55	60	80	110
Model	TDTG60/28	TDTG60/33	TDTG80/33	TDTG80/46	TDTG100/46×2		
Capacity(m ³ /h)	120	200	300	420	800		

FAMSUN TDTG_q Series Bucket Elevator



Sanitation-focused design enables low material residue
 A smart self-cleaning machine base combines with coarse and micro adjustment mechanism, absolutely guaranteeing low material residue.

High operation reliability
 Extensive consideration to safety operation and wear-resistant measures, significantly ensure reliable operation and less downtime.

Easy maintenance and cleaning thanks to customer-friendly structure concept
 Vast door opening design offer easy access to inner components, delivering ease of cleaning and maintenance.

Model	TDTG _q 36/23	TDTG _q 36/28	TDTG _q 40/28	TDTG _q 50/28	
Capacity(m ³ /h)	20	35	55	80	
Model	TDTG _q 50/32	TDTG _q 60/28	TDTG _q 60/33	TDTG _q 80/33	TDTG _q 80/46
Capacity(m ³ /h)	110	120	200	300	420

FAMSUN TGSP Series Level Drag Conveyor

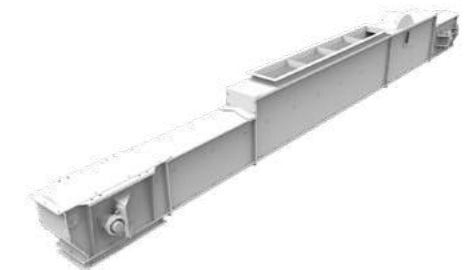
Packing seal is used at the shaft to prevent leakage;
 Patented anti-clogging structure to improve flexibility, safety and tightness;
 Flexible design at the back of the machine to eliminate residue;
 Scraper and recycling cup at the chain to reduce residue;
 Convenient to assemble and install;
 Classic type, CE certified, widely applied in conveying in feed, chemical, grain storehouse, port, malt and oilseed.



Model	TGSP16	TGSP20	TGSP25	TGSP32	TGSP35	TGSP42
Capacity (m ³ /h)	35	55	90	130	200	300

TGSV series horizontal embedded scraper conveyor

The V horizontal scraper conveyor is composed of nose, conveying section, scraper chain, feed port, support leg and tail. The material enters from the feed port and is output from the discharge port. It is a new type self-cleaning scraper machine developed by ourselves. It effectively eliminates the residual on both sides of the bottom of the scraper, and the process suitability is basically the same as that of the TGSSp series.



Model	TGSV16	TGSV20	TGSV25	TGSV32	TGSV35
Capacity (m ³ /h)	40	60	100	140	200

Note: the chain speed can be adjusted slightly according to the output. If you need to adjust, please consult the engineering technology department.

FAMSUN TFPX Series Rotary Distributor



Suitable for distributing granular and powdery materials. Self-locking structure, accurate and reliable positioning with guiding pipe, automatic dust cleaning in the machine, compact structure, small space occupation, ease of maintenance.

Model	TFPX _n -200	TFPX _n -250	TFPX _n -300
Powdery Materials	30	40	60
Granular Materials	40	60	80
Power (kW)	0.55	0.55	0.75

Note: n presents the number of out-feed pipes (4, 6, 8, 10, 12, 14).

FAMSUN TZMQ Series Pneumatic Gate FAMSUN TZMD Series Electric Gate FAMSUN TZMS Series Manual Gate



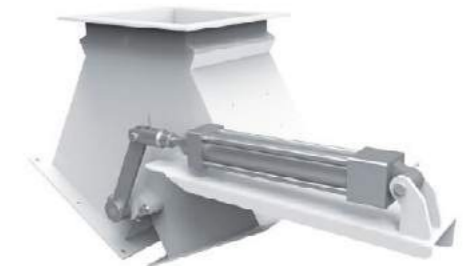
Heavy duty construction, simple and reliable for years of operation. Easy installation, low maintenance. Spout areas vary from 20x20 to 60x60 cm². Widely used for material feeding or discharging in feed, food, flour, chemical, mineral, metallurgy, cement industries.

FAMSUN TBDQ_y Series Pneumatic 2-way Round Type Diverter FAMSUN TBDQ_y Series Electric 2-way Round Type Diverter

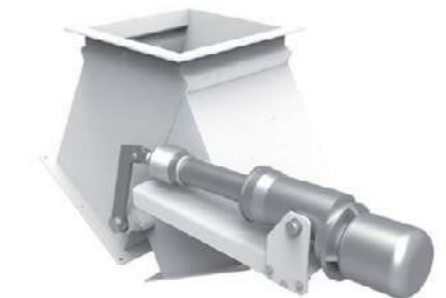


Compact structure, easy installation and operation. Good seal without leakage. Spout area varied from 200x200 ~ 500x500 cm². Widely used for direction control of material flow in feed, food, flour, chemical, mineral, metallurgy, cement industries.

FAMSUN TBDQ Series Pneumatic SquareType Diverter FAMSUN TBDD Series Electric SquareType Diverter



Simple and compact structure, easy installation. Safe and reliable running, low maintenance. 30° and 45° spouts are available. Spout area varied from 100x100 ~ 500x500 cm².



FAMSUN Cleaning Equipment

FAMSUN TCQY Series Drum Type Pre-Cleaner



Simple structure, ease of cleaning and maintenance.
Aspiration system for assistant cleaning.
Suitable for large impurity removal in a material receiving system in feed mills, grain storage facilities and etc.

Model	TCQY63	TCQY80	TCQY100	TCQY125
Power (kW)	0.55	0.55	1.5	1.5
Capacity (t/h)	20	40	60	80

FAMSUN TCQYS Series Double-Deck Drum Type Pre-Cleaner

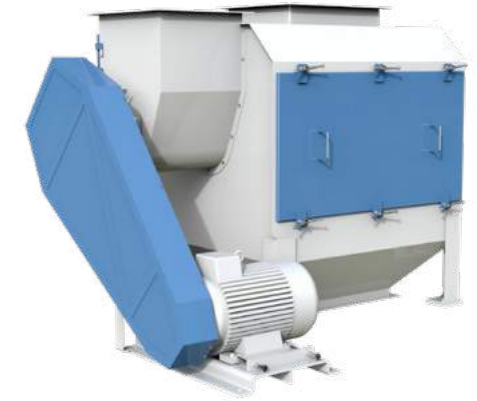


Structured with double decks and an aspiration system, capable of separating large, small and/or light impurities.
Aspiration system for assistant cleaning.
Mainly used for granular material cleaning in industries such as grain storage, food, chemical, mining and so on.

Model	TCQYS85A	TCQYS100A	TCQYS100A-I	TCQYS100A-II	TCQYS125A	TCQYS125A-I	TCQYS150
Power (kW)	2.2	2.2	3	4	4	4	7.5
Capacity (t/h)	30-60	40-85	60-110	80-150	80-150	100-170	120-200

FAMSUN SCQZ Series Conical Drum Type Pre-Cleaner

Simple structure, ease of cleaning and maintenance.
Aspiration system for assistant cleaning.
Specialized for powdery material cleaning in compound feed mills.



Model	SCQZ60×50×80A	SCQZ90×80×110A
Power (kW)	5.5	11
Capacity (t/h)	10-15	25-30

FAMSUN SCQZ Series Finished Product Screener

Effective screener for removing oversized particles and fines from finished products in a compound feed mill.



Model	SCQZ51×46X90	SCQZ55×46X150
Power (kW)	7.5	18.5
Capacity (t/h)	40-60	80-100

FAMSUN TCXT Series Permanent Magnet Sleeve

Powerful iron removal performance without power consumption.
Magnetic field intensity ≥ 3000GS; iron removal efficiency ≥ 99%.
Widely employed in the material receiving system of feed mills, grain storage facilities and etc.



Model	TCXT20	TCXT25	TCXT30	TCXT40B
Capacity (t/h)	20-30	35-50	45-70	80-100

Feed Mill Project

One-source flawless project delivery

FAMSUN is an integrated solution provider in the horizontal business as well as in the vertical ones. It is a competent EPC (Engineering, Procurement and Construction) contractor from consultation to designing, civil construction, manufacturing, logistics, installation, commissioning, training and service.

We learn from our previous projects to make continuous improvement. We applied the FPD (Flawless Project Delivery) throughout our projects to make sure projects are delivered to our clients with highest efficiency and quality possible.

So far, FAMSUN has completed more than 6,600 feed mills all over the world, consisting of:

- Animal feed mill, 5-70 t/h per line;
- Aquafeed mill, 1-18 t/h per line;
- Pet food mill, 1-15 t/h per line;
- Premix mill, 0.5-15 t/h per line.



Consultation

Design

Civil Construction

Manufacture

Logistics

Installation

Training

Service



Animal Feed Mill Project

We offer a broad range of effective animal feed manufacturing solutions.



Poultry and livestock contributions are vital for the global food security, while animal feed production is an important sector in the global food industry. Feed manufacturers use natural resources to guarantee safe, rich and affordable animal proteins.

As a professional and experienced technical solution supplier, FAMSUN offers a wide range of products and solutions for the feed industry. In order to produce quality products and achieve sustainable operation, we take into account the processing reliability, energy efficiency, optimum capacity, hygiene, product traceability, handy operation and low maintenance in our designing standards, specific feed processing equipment and plant solutions.



Aqua feed Mill Project

We cherish aquaculture sustainability.

The increase of world population, aquaculture activity and consumption of fish are a result of consumer's rising health awareness and has continued to stimulate the demand for aquafeed. However, aquafeed manufacturers must take into consideration the limited resources of key ingredients such as fish meal and fish oil, feed safety, water pollution and other sustainability and environmental issues.

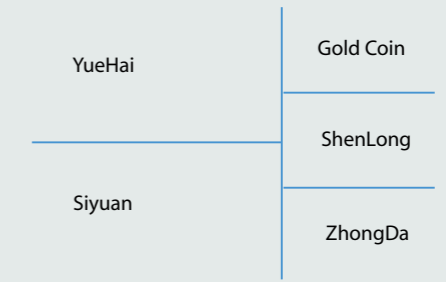
FAMSUN has rich experience in delivering aquafeed processing lines and plant construction solutions in the traditional aquaculture markets in China and Asia as well as in the emerging Latin American and African markets. FAMSUN helps its customers to increase aqua feed production efficiency, flexibility and sustainability, through constantly investment in the innovation of aquafeed extrusion and pelleting systems as well as drying systems, and in the research and application of different raw material, the growth performance of aquatic species, etc.



Wellhope



YueHai



Premix Plant Project

We focus on high value and safe nutritional solutions.

The industrialization of meat production, growing global demand for protein-rich products, the increase in meat consumption, meat quality, safety awareness, and the frequent outbreaks of diseases have driven the demand of feed premixes and additives, especially in the emerging markets. Rising cost of raw materials and regulation factors are the main restrains but also potential opportunities for feed manufacturers.

FAMSUN is familiar with the rules, requirements and standards of premix production and applications, and applies its knowledge into the designing, manufacturing and installation of premix processing solutions, to enable customers process high value raw materials efficiently and produce precise and contamination-free quality premix products to the market.



● XinNong



● GuangAn



Dry Pet Food Plant Project

We help pets to live longer and healthier lives through a well-balanced nutrition diet.

Pet food contains plant and/or animal materials, intended for consumption by pets and formulated according to their strict nutritional needs, which generally consists of cereal grains, meat, milk products, vitamins, vegetable oils and minerals. Qualified pet food is usually characterized by its balanced nutrition, high digestibility, excellent palatability and improved immune system.



The flavor, color, shape and even aesthetic quality of package can influence pet owner's consumption decision. To be competitive in the high-end market, pet food manufacturers must make distinguished products.

As a professional technical supplier, FAMSUN works with pet food manufacturers to develop high-value, nutritional and attractive pet food products. FAMSUN's extrusion system, post treatment processes, state-of-the-art processing techniques and customized solutions enable customers to produce high-end competitive products.





Steel Silo

We support customers in the grain value chain.

We offer complete logistics solutions in grain handling, cleaning, drying and storage. From grain collection points to grain elevators, from inland and water terminals to processing plants such as feed mills, rice mills, flour mills, breweries and oilseed processing factories, FAMSUN has constructed over 1200 steel silo projects around the globe.

The key products and systems include:
Assembly type steel silos: 1-18,000 t/silo; Spiral steel round silos: 1-10,000 t/silo;
Material handling systems: bucket elevators, conveyors, sweepers and spreaders;
Conditioning and drying system: cleaners, dust collectors, dumping systems, dryers, fans and controls.



Steel Structure

For better, safer and more economical construction.

Steel is cost effective, structurally sound and manufactured to strict specifications and tolerances. It is easy to modify, install and offers design flexibility. It allows for improved quality of construction and less maintenance, while offering improved safety and resistance.

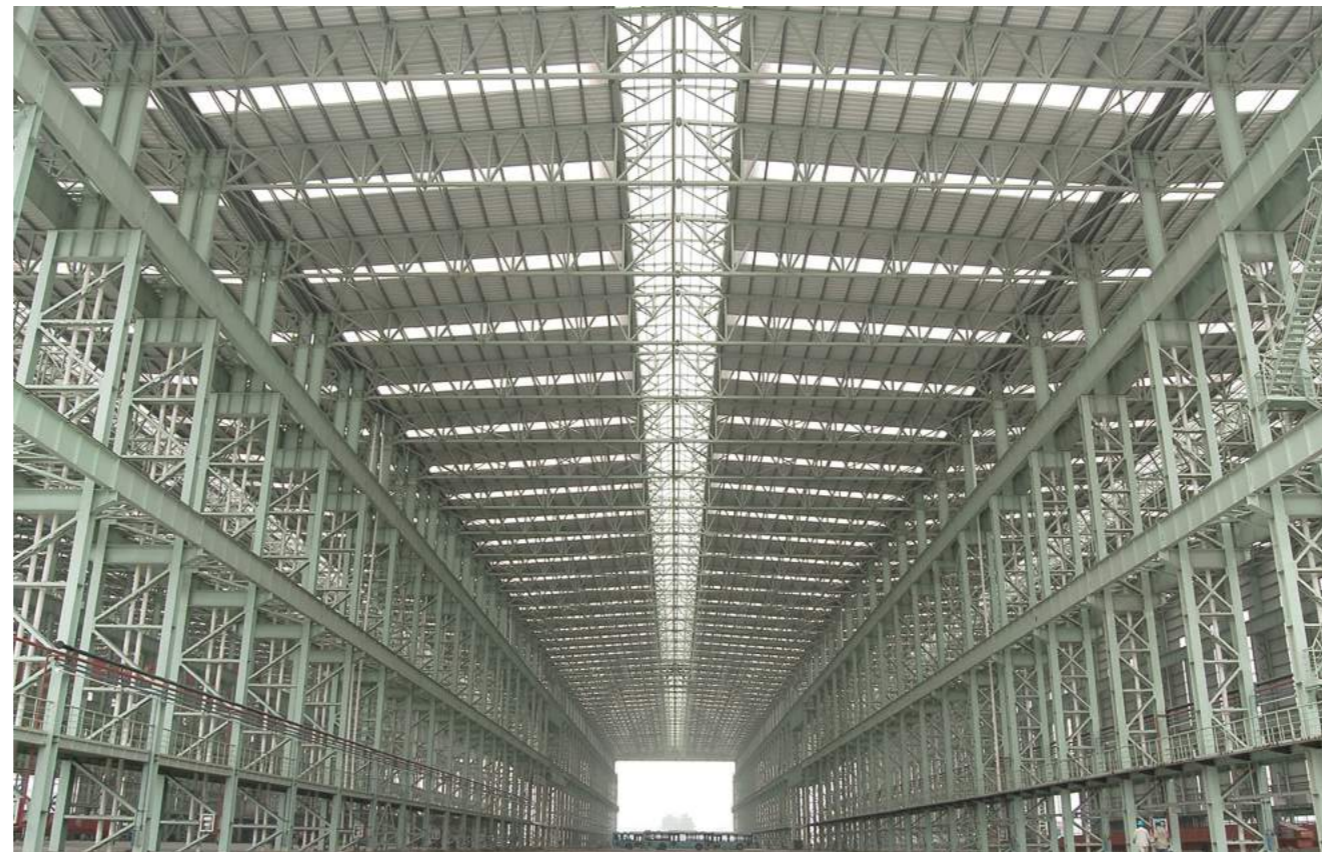
From designing to construction following AISC standard, FAMSUN has proved itself as a reliable steel structure construction partner by delivering factory buildings, warehouses, high buildings, airports, gymnasiums, conference halls and bridges.

FAMSUN's Quality Management System (QMS) ensures that we deliver a consistent high quality;

ISO certified: 9001 2008 for designing, manufacturing, fabrication and installation of steel structure and turnkey projects.

Certified structural steel fabricator, integrated engineering and design company.

Efforts are especially focused on delivering steel structure buildings, warehouses and other steel structure products such as rising tower and catwalks for feed mills, rice mills, grain storage terminals and other facilities in agro-industry.

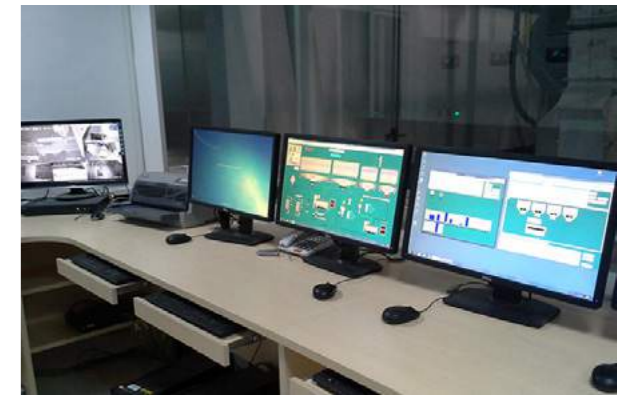


Automation System

We aim to be a frontrunner and a pioneer in agri-food industrial automation.

We integrate solid expertise with hardware and software technologies to increase productivity, efficiency and flexibility.

With our capability and experience in plant automation engineering, process control in feed, rice milling and grain logistics, we help our customers lower cost and increase efficiency. In order to provide comprehensive solutions and services to meet different automation needs, FAMSUN created a Joint Venture with WEM Automation LLC in 2011.

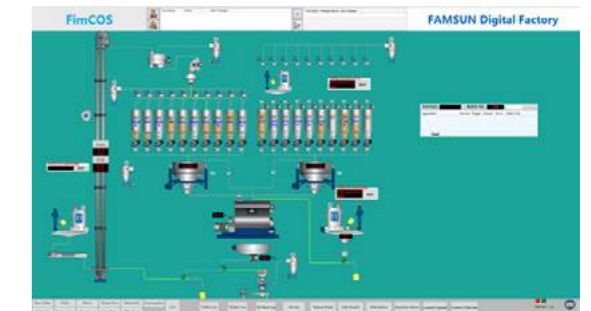


FAMSUN-WEM Automation products and solutions include:

- Systematic solutions: PC-based MYCOS Control System, FIMCOS Control System and FAMSUN-WEM 4000 Control System for full plant automation; Mimic screens, instrument controlled batching system and PC-based batching system for production process control;
- Hardware solutions: stand-alone control boxes for single machine production operation; Mimic control screens and cabinets, PLC hardware, IT hardware, weighing scales and sensors.
- Quantitative bagging machines: Screw, belt or gravitation bagging for packing powdery and granular products into bags ranging from 5 up to 100 kg.

FAMSUN-WEM 4000 System:

- It applies PC/PLC system in the operator interface, data management, plant monitoring and all real time process control.
- It is supported by SQL Server Database and capable of interfacing with all formulation software and corporate ERP or MIS system.
- It uses separate control modules for different purposes and economical system expansion.
- Traceability module delivers plant wide production tracking and lot code tracing;
- It uses wireless PDA and remote control.



FIMCOS System:

- **Load balancing:** It supports the deployment of multi-machine, multi-server distributed network, which, in return, contributes a system of balanced load and stable running.
- **Data interconnection:** Data sharing among all workstations is possible. Any workstation, if authorized, can monitor and access to the production data of the whole plant. It also can operate any production line or equipment after authorized.
- **Remote upgrade:** It supports the deployment of a central server, which can supervise and manage the control system of each factory in a cooperation centrally.
- **Good extensibility:** The system is designed with good extensibility, and can connect to a variety of management systems or control systems through the mainstream communication protocols and interface technologies.



Robotic Machinery

We offer more choices for improving operations.

FAMSUN Robotic Machinery combines the latest technology with research, innovation, and development of a balanced product portfolio to increase efficiency.

The value-added products and systems have already helped many customers in their respective markets such as feed manufacturing, grain milling and handling, food processing, pharmacy and port facilities.

The main systems and products include:

- Robotic pelletizers and stacking lines;
- Automatic packing machines and packing lines;
- Bulk loading and transportation systems.



Customer Service

Our Goal is to provide excellent customer experience.

By raising the efficiency and value of our customer's equipment and operations and providing first-class service, we have expanded our service capabilities and support around the world. Our service engineers receive continuously updates in training, tools and support programs and keep their knowledge and skills on the latest standards. Our quick response service network covers not only local offices, spare part warehouses, field service and online support, but also remote services for immediate and efficient troubleshooting.



Customer service capabilities and offerings include:

- Spare parts. To secure plant availability.
- Repair. For high reliability and minimizing downtime.
- Maintenance. To solve problems before they occur and remain peak performance of equipment.
- Retrofit & Reconditioning. To create new life into old parts.
- Training & Courses. To deliver a positive experience.
- Optimization. For noticeably higher productivity and help remain fit to meet the challenges.
- Other supports such as consulting, installation, commissioning, etc. all help to ensure higher plant efficiency.

FAMSUN Group Co., Ltd.

Add.: No.1 Huasheng Road, Yangzhou, Jiangsu, China 225127
Tel.: +86-514-85828888

